

BUSINESS PROCESS AUTOMATION

bpa.viewiss.com



INNOVATIVE SOFT SOLUTIONS

WWW.VIEWISS.COM

Business Process Automation

REPORTS

24x7 live online status / analytical reports for right and **timely decision making** to improve your Business efficiency and Productivity.

SCANNERS

As a part of automation, Scanners are to be installed at the shop floor for easy data capturing.

TAILOR MADE

Exclusively developed for **SMEs/Batch Process Industry**. Unlike other ERPs available in the market, our software automates many actions without involving human.

BUSINESS LOGIC MODULE

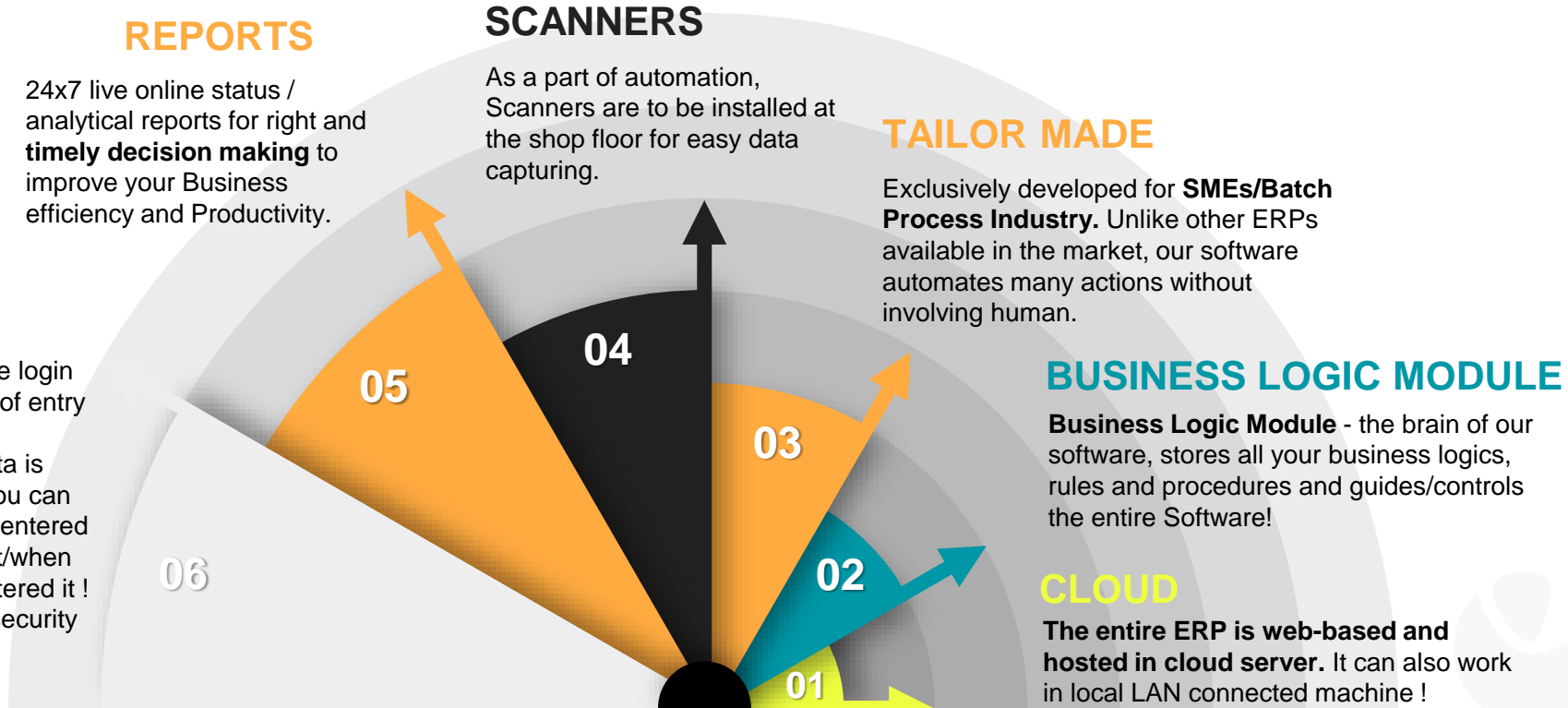
Business Logic Module - the brain of our software, stores all your business logics, rules and procedures and guides/controls the entire Software!

CLOUD

The entire ERP is **web-based and hosted in cloud server**. It can also work in local LAN connected machine !

DATA

It captures the login name & time of entry automatically whenever data is fed. Hence you can see who has entered the data/what/when they have entered it ! Very Useful security feature.



Benefits of Our Cloud Server

No investment for you on server, its repair, maintenance and replacement.



No need to employ a person to maintain the server and also the AMC cost gets saved !



You can access the data from your Computer/Mobile 24x7 from anywhere which wont be possible if the software is installed on local machine.



No need to invest for software for every site and can use the same software for all sites.

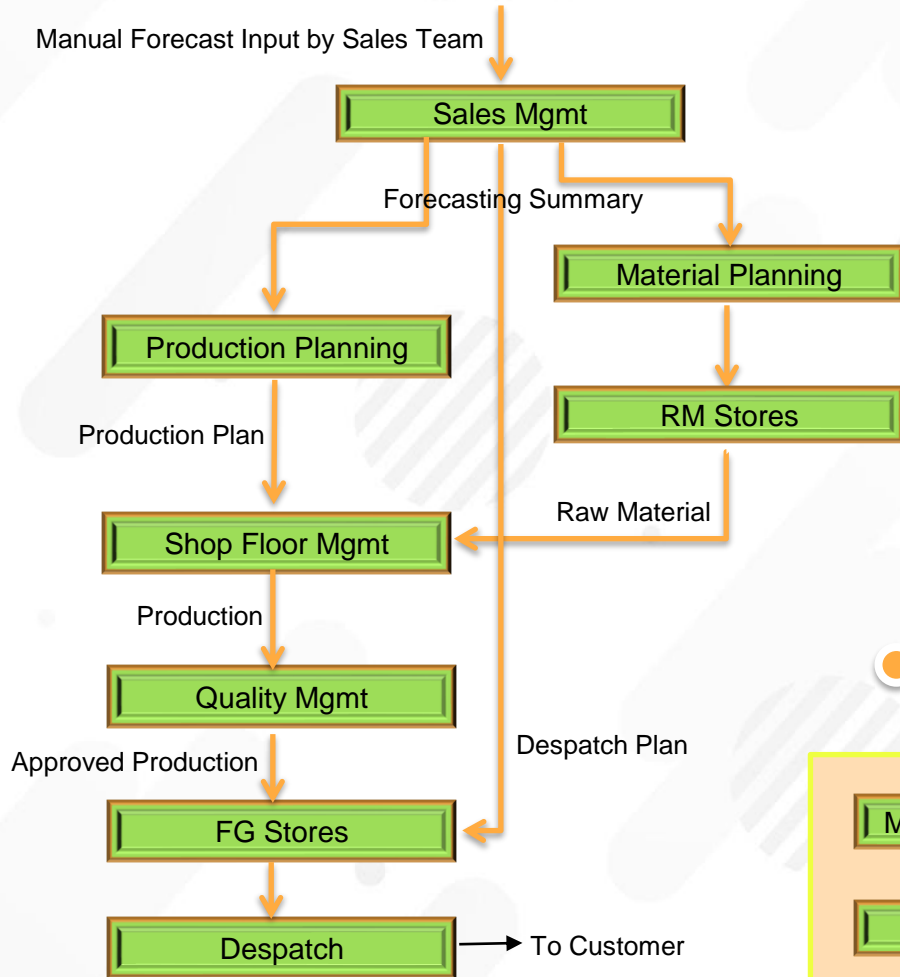


No need to worry about taking backup of your data regularly since it will be taken care of us !



Offices at multiple locations will be greatly benefited if the software is hosted in cloud server as accessing the data becomes very easier.

MODULAR OPERATION



Every module get its input automatically from previous module.

Every module can work independently also. The input requirement should be feed manually thro their input screens.

Hence customer can leave any module which they feel not important to them in order to reduce their investment. The left out modules can be added at any time as and when needed in future.

Independent Modules

Maintenance

Calibration

Supplies Mgmt

Payroll

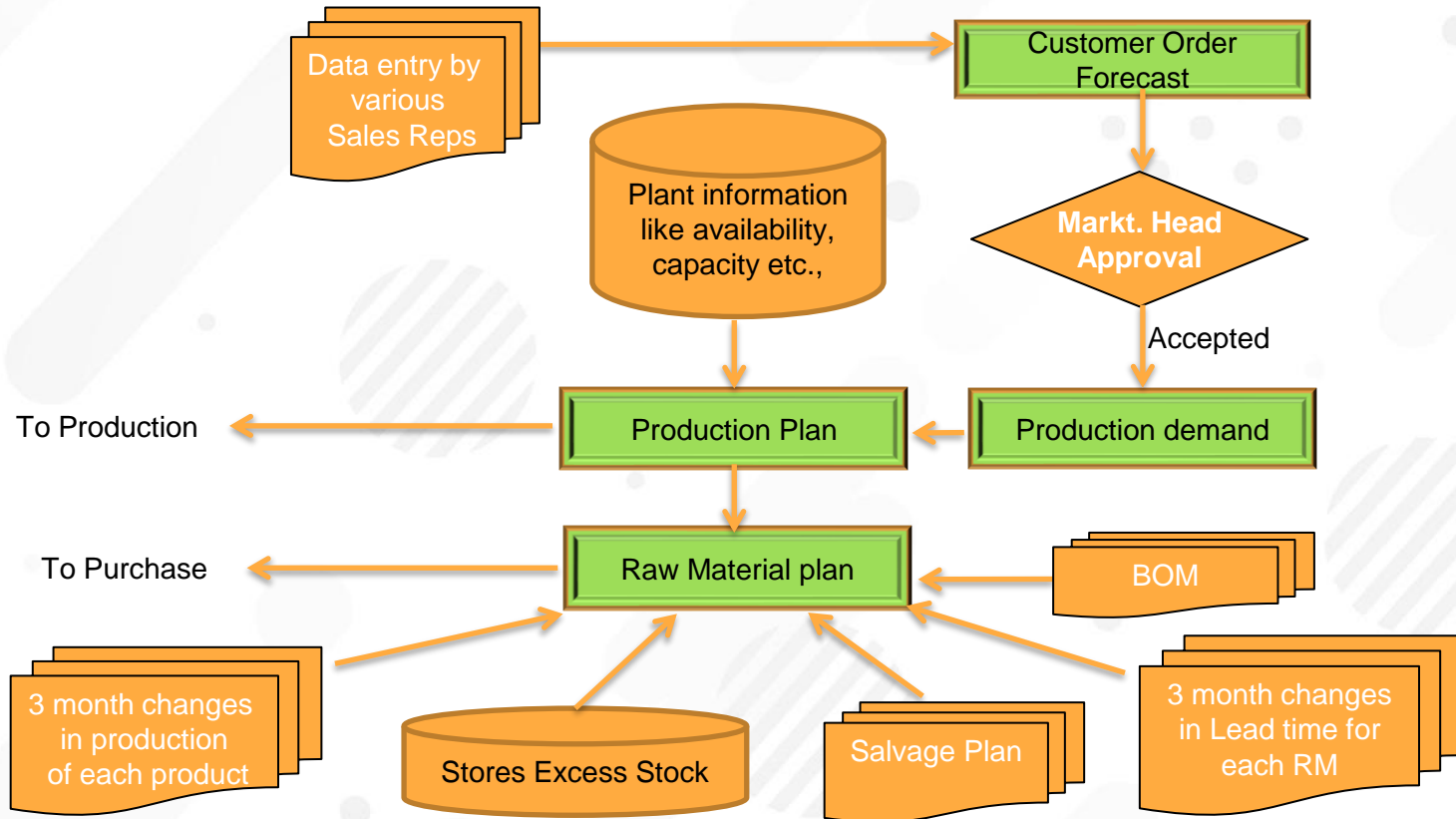
Debtor Mgmt

ISO System Mgmt

BUSINESS LOGIC MODULE

- ✓ This a **special module in our system** which is not available in many other ERPs
- ✓ It stores **all business logics and rules** (provided by us with our experience and provided by you) to control the operation of the software.
- ✓ It tracks all Plant operation connected activities and
 - **Automatically Sends SMS/Voice call** to maintenance after B/D. Intimation is entered by production dept.
 - **Automatically Sends material request** to purchase every week on list of Materials to be ordered.
 - Generates Production planning automatically with RM Plan and updates regularly for any change.
 - Reviews Productivity trend month-on-month.
 - Tracks production trend & RM lead time trend and changes min. stock accordingly and send message to top management on inefficiency if any.
 - Tracks RM Inventory and controls ordering to eliminate NON-Moving stocks
- ✓ It analyses the whole month data and automatically prepares exception report to the management on the following topics once a month for review.
 - Poor order conversion rate by region / sales person, not meeting sales budget by region / sales person.
 - Failure rate of delivery month-on-month.
 - Summarize Excess RM consumption batch-wise.
 - Decrease in Production efficiency, increased quality rejections, increase in downtime if any.

Sales Forecasting - Production Planning - Material Planning



Sales Reps can change the data any number of times across the month.

Production & Material plan will be automatically updated instantly and will be available to Production and Purchase Depts.

Marketing Forecasting

- ✓ Every sales representative across the country is given their individual login.
- ✓ They can enter customer order/forecast data in their computer/mobile **from wherever they are.**
- ✓ They can also update the date of requirement/quantity (or) cancel the order altogether at anytime across the month as long as production is not started for that particular order.
- ✓ These information gets summarized by our system as forecast for the month.
- ✓ The forecast can be seen by HODs for approval.
- ✓ Only after approval, this forecast will be made available to concern people for further action.
- ✓ **Sales people can see their order status** anytime from mobile like Approval Status, Production planning date, production completion date, etc., till it gets dispatched from the plant !

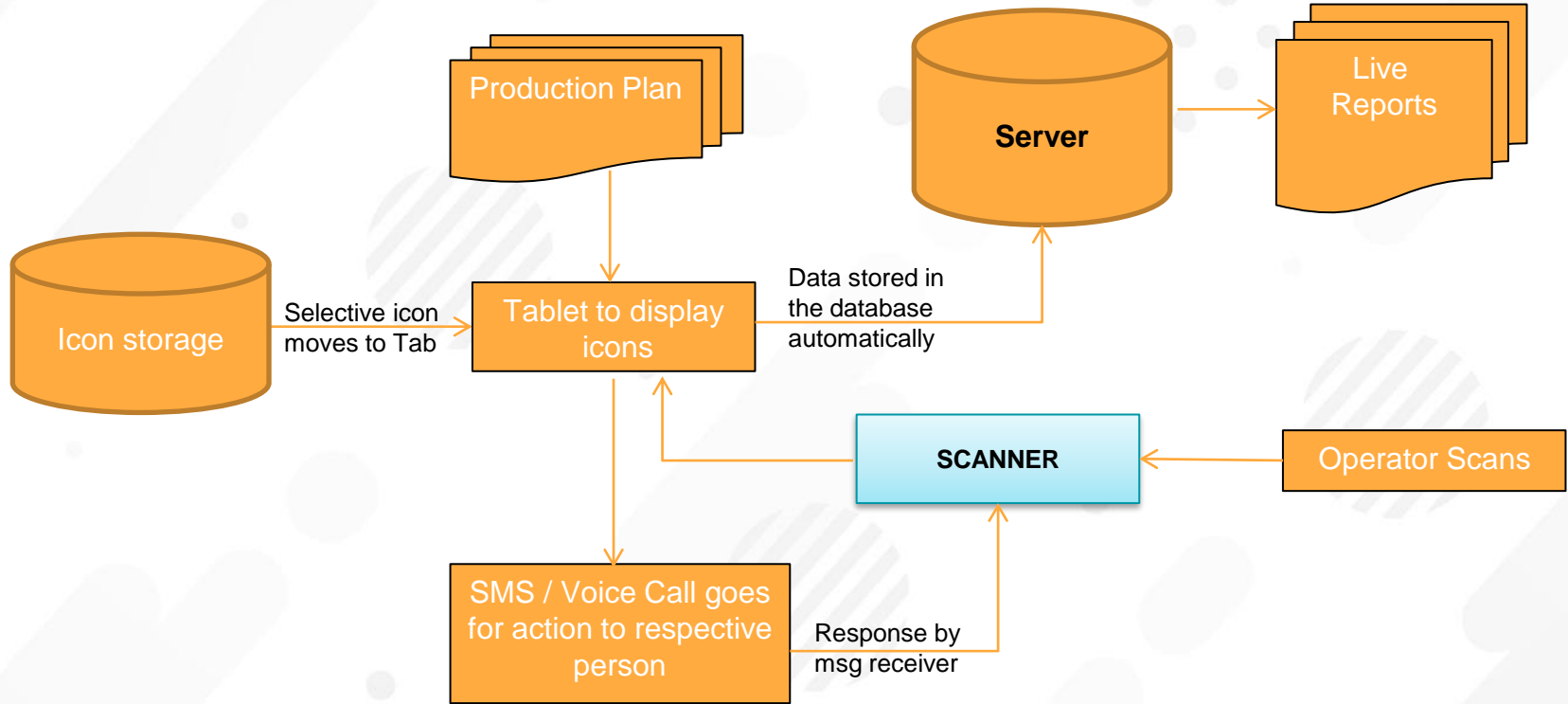
Production Systems

There are 2 system of machine arrangements in the shop floor,



- ❑ **Line system** – Machines meant for different process are grouped and arranged in process sequence to produce certain Products. Most of the shop floor which are producing fixed set of products have this system.
- ❑ **Process system** – Machines meant for a particular process are grouped together in single place. Any product that needs this Process comes to this place to complete the Process. Most of the shop floor which are producing wide range of products with varying demands have this system.

Each system has its own advantages and disadvantages. Process based system is more complex in the context of planning & management. **Therefore the entire presentation is based on process system.**

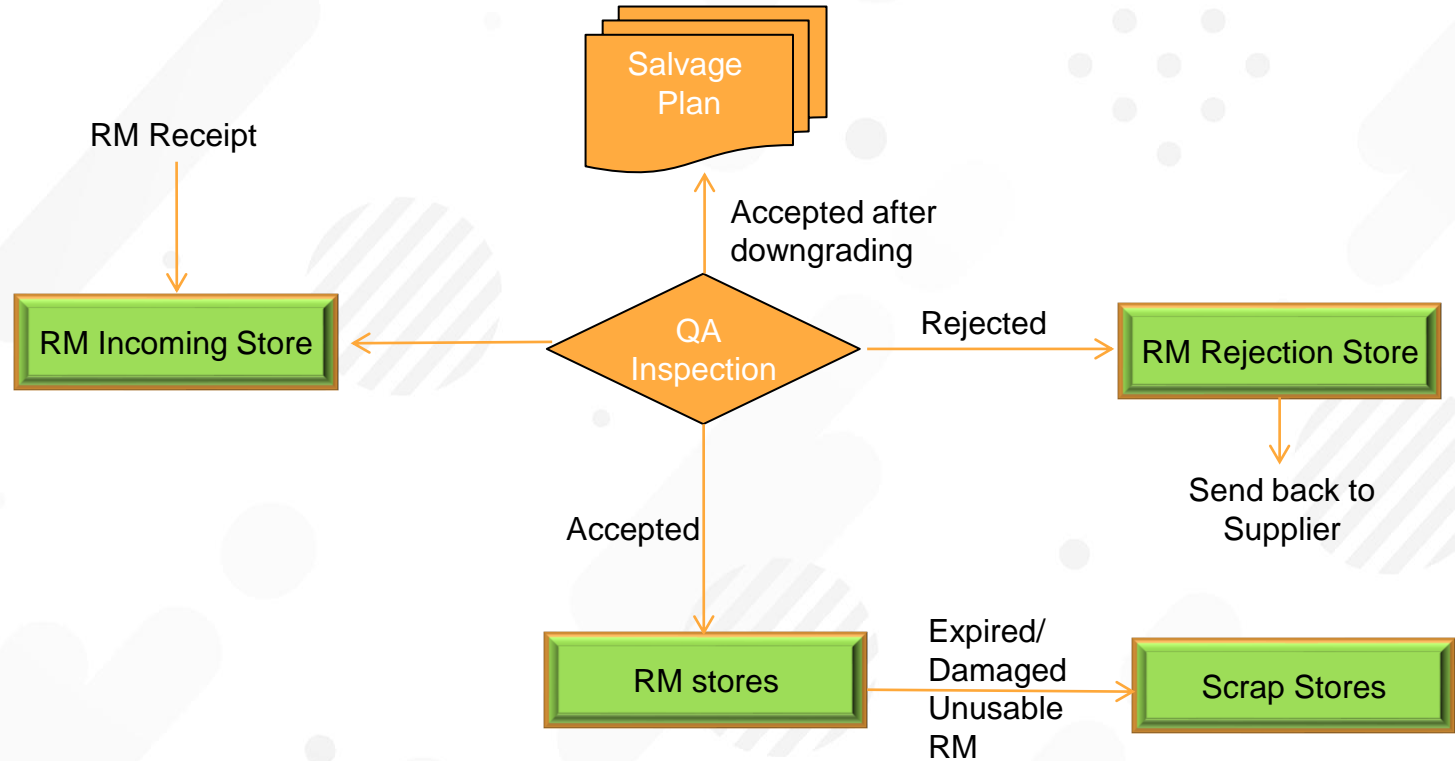
Production Planning



Production Planning

- ✓ Our software automatically generates **production plan** which will be available instantly for everyone who are authorized to see it. Production plan will be updated automatically whenever forecasting undergo changes. 
- ✓ In case many line/plants available to execute an order, **our logic module gives you option** to select the line/plant and it will schedule the production. For this purpose, it will show you the start date and end date of production in each case based on their availability after previous production.
- ✓ You can also give **one time instruction to our logic module** so that it automatically decides production line and planning will be done in best possible way without your intervention ! 
- ✓ The current production and next production will automatically appear in shop floor tab screens. **No need to circulate** production plan whenever it is updated across plant. Big human work is eliminated.
- ✓ This production plan is also automatically updated if there is any delay in completion of production as per plan.
- ✓ Saves a lot of time of executives who can concentrate in other area of his job.

RM Stores



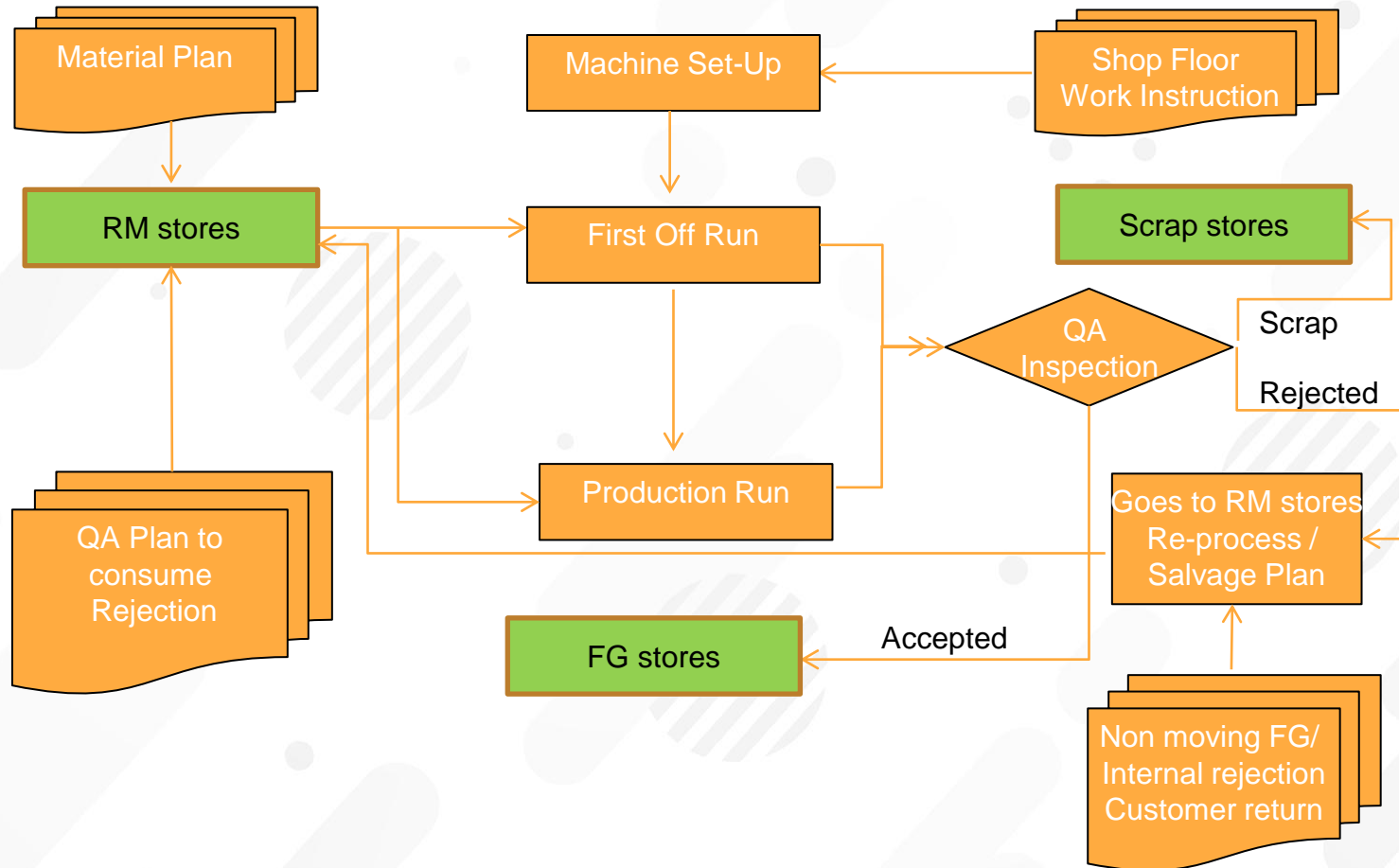
Material Planning

- ✓ Based on the production plan, Material Planning is automatically generated by our software and it also automatically selects **low cost BOM** at current RM price among BOMs available for a product !
- ✓ In the month end, if the sales has not happened as per the plan, then there will be excess RM in stock. Our **Logic Module automatically tracks** this excess RM & forces Material planning module to reduce RM quantity to the extent of excess stock !
- ✓ Purchase person can order only this quantity which is **the latest updated qty as on that date**. Hence no chance of excess ordering by mistake.
- ✓ It is a practice in almost all organizations to look at **non-moving stock at regular interval and** take necessary action to reduce it. But our software **eliminates the generation of such an excess stock altogether** and your working capital is slimmed down!
- ✓ Our software calculates lead time stock, safety Buffer to know the minimum stock level and fixes maximum stock level by adding economic order qty for each order. **These calculations are done once in three months automatically.** Therefore the minimum stock gets corrected automatically as per changes in production and changes in lead time of Material supply.

RM Stores & Material Issue

- ✓ Production Person selects the batch no. in the computer, the complete material list as per BOM, Qty for each RM as per Production Plan, Qty already drawn & Balance Qty yet to draw appears in the screen. He just needs to edit “Balance qty yet to draw” column, if required and press “Send to store” button. Not possible for wrong material selection & wrong calculation of quantity !
- ✓ Stores person can see the request in the screen and issue RM to the production person after scanning the ID card as acknowledgment of receipt. And software automatically adjusts stock.
- ✓ No need to prepare any physical issue slip by Production. No need to make detailed data entry by stores person.
- ✓ When Production returns any excess material back to store, Stores person can select the Batch no. to get the list of material issued for that Batch. He can then enter the quantity being returned.
- ✓ Any excess consumption will appear in exception report to management batchwise, anytime.

Production



Scanning System in Production Shop floor for Data Capturing

Data storage without typing anything in shop floor is our goal here !

There will be sets of scanners & tabs installed on the wall in shop floor at different places.

Employees will have barcode included in their ID card. Shop floor Employee will scan his ID card and can touch any one icon (like mech B/D, electrical B/D, No order , No RM) displayed on the tab screen.

Icons will change dynamically based on the person scanning and production status of line.

Software captures and stores information like employee name, current time, reason for scanning etc., in the database.

And automatically sends SMS / Voice call to respective department intimating the information for further action.

The details of information scanned are shown in the following slides...

Tablet Screen in Shop Floor

Running Customer Order: L2323

Product: AN3432

Quantity: 70000

Start Time: 19/02/19 18:35



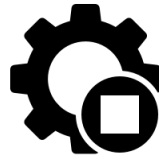
Electrical B/D



Mechanical B/D



Production Start



Production End



Power Failure



Quality Failure



Shift Start



Scrap



No Order



No RM

Scanned Employee: Ram

Scan Time: 20/02/19 17:20

Scan Remarks: Under Mechanical Breakdown

Next Customer Order: K2313

Product: SN2319

Quantity: 80000

Expected Start: 20/02/19 07:40

Scanning System

SCANNED BY

SITUATION

ICONS TO SELECT / ACTION

Operator

Shift Change

Setup Icon

Operator

Shift Change

Production Start Icon

Operator

First Off

QA Icon
SMS goes to QA dept. Head

QA

Take Samples

QA First of Time Starts

Operator

Regular Run Starts

Production Start Icon

Operator

No RM

No RM Icon

Operator

No Order

No Order Icon

Scanning System

SCANNED BY

SITUATION

ICONS TO SELECT / ACTION

Shift supervisor - Handing Over

+

Shift supervisor - Takeover

Shift Change

Line, Enter Production, Rejections

Operator

B/D intimation

Electrical B/D Icon (as example)
SMS automatically goes to Elec dept.

Electrician

M/C taken over for
maintenance

Maintenance starts

Operator

M/C taken over
after maintenance

Production Starts

Operator

Power failure

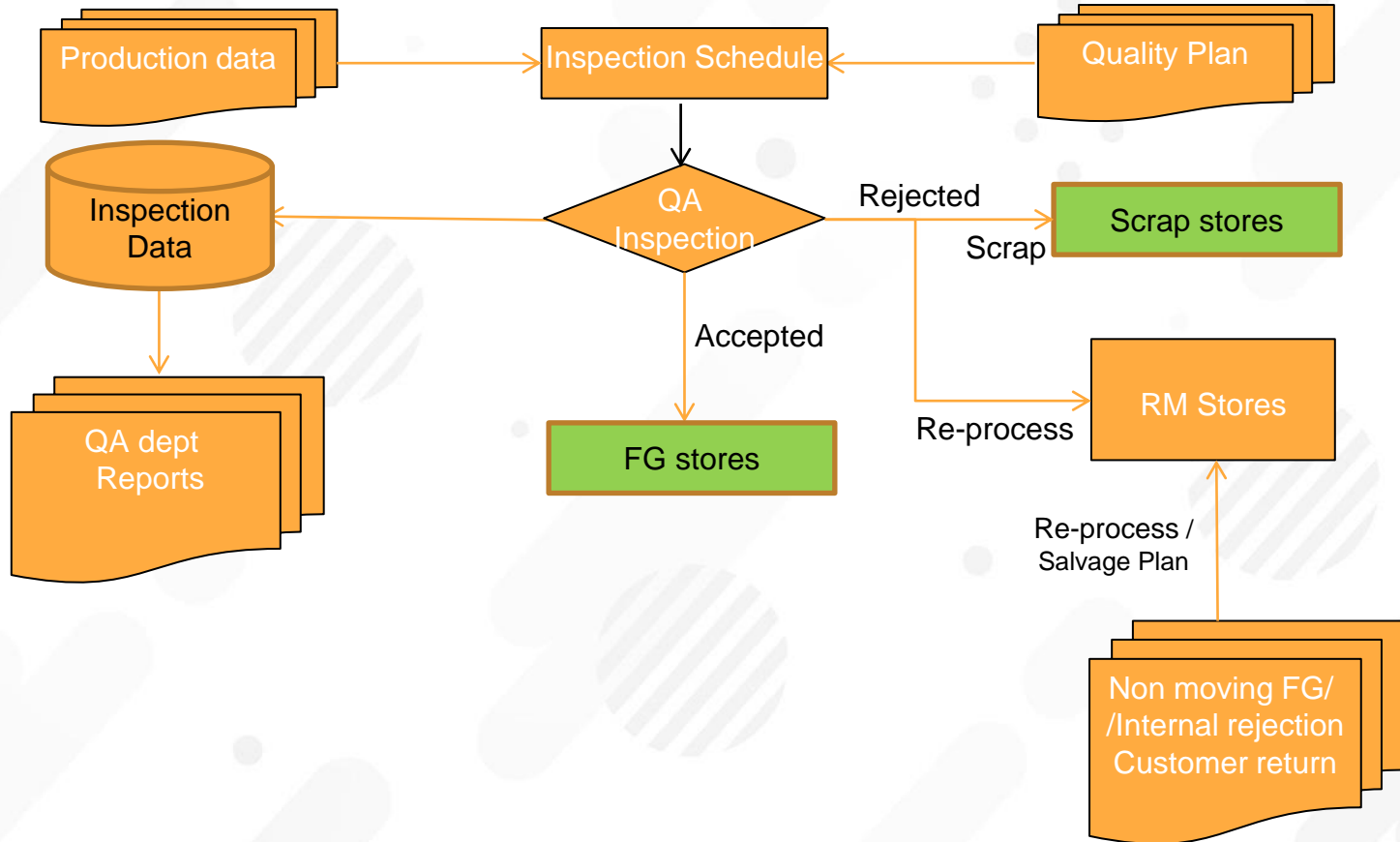
Power Failure Icon

Operator

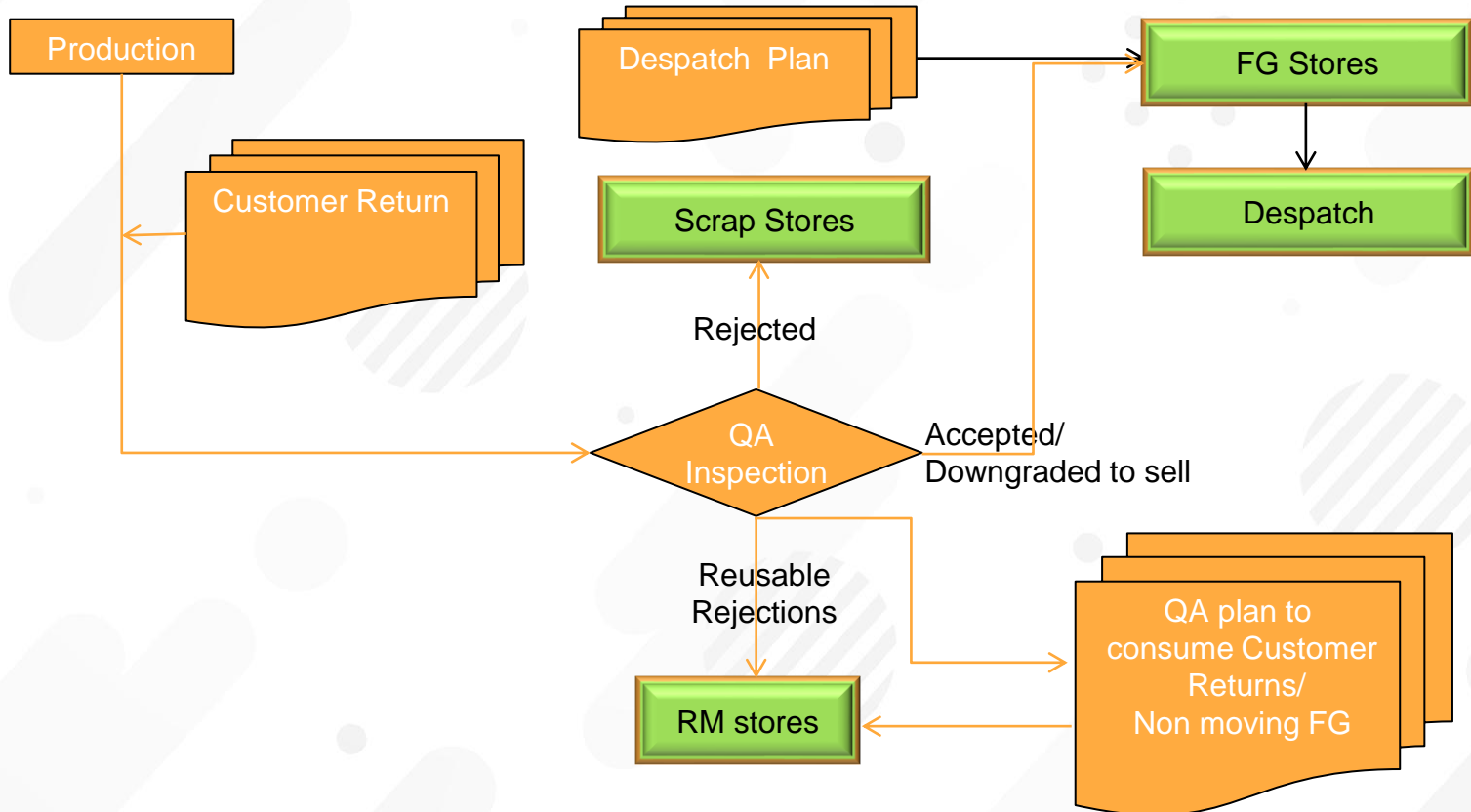
Power resumed

Power Resumed Icon

Quality



FG Stores



QA & FG Stores

QA APPROVAL

- ✓ QA screen automatically displays QA inspection plan for current production as per the Quality Plan. The inspection data screen will automatically appears showing inspection parameters, limiting values, space to enter actual values and approval status.
- ✓ Concern person needs to fill the on-screen inspection report.
- ✓ Also salvage plan for rejected items can be filled, if possible. Our system will make sure to include these rejections in BOM as per the recommendation in next opportunity. No one needs to remember them and follow up which is impossible.

FG STORES

- ✓ Stores person can see the list of approved Products with Quantity by QA. After physical verification, he can just click ok button and they will appear in stock and he can issue them for despatch.
- ✓ No paper work by anyone !

Reports

☐ Daily Reports

- ✓ Marketing Forecast.
- ✓ Production Summary.
- ✓ Productivity.
- ✓ Downtime.
- ✓ Current Status report.

☐ Analytical Reports


- ✓ Operator Performance analysis.
- ✓ Machine Under capacity analysis.
- ✓ Productivity Trend.
- ✓ Downtime Trend.
- ✓ Power Failure Trend.

Demo Site - Login Page

Business Process Automation x +

Not secure | bpa.viewiss.com

Web address for demo site


BPA 3.4


demo

**** [Forgot Password?](#)

Log In

New User? [Contact Admin](#)

Login Password are already filled by us. Just press Login button to get in !



Its in the Cloud !

The entire software is hosted in the cloud & can be accessed from anywhere & anytime !

You can open this site in your computer/mobile & operate to explore before buying !

Landing Page

@ B P A 3 . 4

Business Process Automation



Main Menu

MIS Reports menu is selected. It displays all its sub menu.

PPC *

Production

Quality*

Stores*

MIS Reports

Masters *

Daily Reports

Current Status

Forecast

Production Schedule *

Productivity

Prodn Summary

Trend Charts

Production Trend

Downtime Trend Chart

Productivity Trend

Power Failure Trend

Sales Trend Chart *

On-Time Despatch Trend *

Analytical Reports

Planning Efficiency

Schedule Adherence *

On-Time Despatch

Despatch Performance

Operator Performance Analysis

Under Capacity Analysis

* Marked Items are not available to access in demo.

Marketing Forecast

MAIN MENU

LOG OUT

Bold letter show the screen you have entered



BPA 3.4

CURRENT STATUS

FORECAST

PRODN-SCHEDULE

PRODUCTIVITY

PRODN SUMMARY

To logout

Forecast

Customer	Product	Qty Needed	Needed On	Entered By	Entered On
Cus4	Pd2	40000	09/04/2019	Ram	24/04/2019
Cus1	Pd1	25000	13/04/2019	Suki	25/04/2019
Cus1	Pd2	25000	15/04/2019	Suki	25/04/2019
Cus4	Pd2	20000	17/04/2019	Ram	24/04/2019
Cus2	Pd1	15000	18/04/2019	Suki	25/04/2019
Cus3	Pd3	30000	19/04/2019	sandanam	24/04/2019
Cus2	Pd2	20000	22/04/2019	Suki	12/05/2019
Cus3	Pd3	40000	25/04/2019	sandanam	07/05/2019
Cus4	Pd2	30000	29/04/2019	Ram	28/04/2019
Cus4	Pd2	40000	07/05/2019	Ram	24/04/2019
Cus1	Pd1	25000	10/05/2019	Suki	25/04/2019
Cus2	Pd1	15000	12/05/2019	Suki	25/04/2019
Cus1	Pd2	25000	15/05/2019	Suki	25/04/2019
Cus4	Pd2	20000	17/05/2019	Ram	24/04/2019
Cus3	Pd3	30000	18/05/2019	sandanam	24/04/2019
Cus2	Pd2	20000	22/05/2019	Suki	12/05/2019
Cus3	Pd3	40000	25/05/2019	sandanam	07/05/2019
Cus4	Pd2	30000	28/05/2019	Ram	28/04/2019

Clicking this icon will download the report to your computer as excel file.



Marketing Forecast



BPA 3.4

CURRENT STATUS

FORECAST

PRDGN SCHEDULE

PRODUCTIVITY

PRDGN SUMMARY

Bold letter always
shows the current
screen

Forecast

Customer	Product	Qty Needed	Needed On	Entered By	Entered On
Cus4	Pd2	40000	09/04/2019	Ram	24/04/2019
Cus1	Pd1	25000	13/04/2019	Suki	25/04/2019
Cus1	Pd2	25000	15/04/2019	Suki	25/04/2019
Cus4	Pd2	20000	17/04/2019	Ram	24/04/2019
Cus2	Pd1	15000	18/04/2019	Suki	25/04/2019
Cus3	Pd3	30000	19/04/2019	sandanam	24/04/2019
Cus2	Pd2	20000	22/04/2019	Suki	12/05/2019
Cus3	Pd3	40000	25/04/2019	sandanam	07/05/2019
Cus4	Pd2	30000	29/04/2019	Ram	28/04/2019
Cus4	Pd2	40000	07/05/2019	Ram	24/04/2019
Cus1	Pd1	25000	10/05/2019	Suki	25/04/2019
Cus2	Pd1	15000	12/05/2019	Suki	25/04/2019
Cus1	Pd2	25000	15/05/2019	Suki	25/04/2019
Cus4	Pd2	20000	17/05/2019	Ram	24/04/2019
Cus3	Pd3	30000	18/05/2019	sandanam	24/04/2019
Cus2	Pd2	20000	22/05/2019	Suki	12/05/2019
Cus3	Pd3	40000	25/05/2019	sandanam	07/05/2019
Cus4	Pd2	30000	28/05/2019	Ram	28/04/2019



Sample Data Entry Screen (Production Entry)

Editor area to enter data

PRODUCTION ENTRY

EDITOR

Date Shift Plant
 Int. Order No Batch No Product Name
 Approved Qty Scrapped Qty Prodn Completed ?
 Completion Time

Action Buttons

Add: you need to fill the fields in the editor and press Add button to add data. Immediately data is stored and displayed in the table.

Filter: Enter any field you need to filter in the editor and Press Filter button. Table will display data as per the editor data

Edit: select any row in the table. Automatically that row data will be moved to editor. Then you can change any data. Then press Edit button to save the edited data. The new data will appear in the table.

Delete: Select any row in the table. Now press Delete button to delete the selected row.

Reset: It will erase all data in the editor.

Clicking this button in any of the row will copy the data of that row to editor for you to make changes

Daily Production

	Date	Shift	Plant ID	Line ID	Product Name	Produced Qty	Approved Qty	Scrapped Qty	Prodn Completed	Completion Date Time	Internal Order	UserName	TimeStamp
<input type="button" value="S"/>	12/04/2020	A	IM	IM1	Pd1	4000	4000	0	Y	12/04/2020 20:19:44	4332	demo	04/04/2020 00:00:00
<input type="button" value="S"/>	08/10/2019	B	IM	IM1	Pd1	3434	3434	34	N	02/10/2019 18:51:55	43434	demo	04/04/2020 00:00:00

Displays data when filter button is pressed (after filtering as per the editor data if any)

Every time data is added /Updated, the Login ID & Time of entry is automatically recorded by the software. That can't be edited by anyone.

Production Summary Report



BPA 3.4

CURRENT STATUS

FORECAST

PRODN SCHEDULE

PRODUCTIVITY

PRODN SUMMARY

You can select any of these options and press run button to get the report

Report

Date

- Summary ▼
- select...
- Summary
- Product-Wise
- Plant-Wise
- Line-Wise

25/04/2019

Run

Production Summary

		Plant ID	Machine	Produced Qty
+	25/04/2019	IM	Automatic Bandsaw Machine	13000
+	25/04/2019	IM	Automatic Bandsaw Machine2	7400
-	25/04/2019	IM	CNC Boring Machine	11800
			Shift	Produced Qty
			A	5800
			B	6000
+	25/04/2019	IM	CNC Boring Machine2	7200
+	25/04/2019	IM	Printing Press	19700
-	25/04/2019	IM	Printing Press2	6000

Click to expand

Now it is clicked and the it expanded to show shift wise production.

Current Status

MAIN MENU

LOG OUT

If this much of time if the system was left Idle then server will automatically disconnect

[idle timeout in 1496 secs]



BPA 3.4

CURRENT STATUS

FORECAST

PRODN SCHEDULE

PRODUCTIVITY

PRODN SUMMARY

Current Status

Plant ID	Machine	Running	Stopped From	Stoppage Reason
IM	Automatic Bandsaw Machine	Y		
IM	Automatic Bandsaw Machine2	Y		
IM	CNC Boring Machine	Y		
IM	CNC Boring Machine2	N	30/04/2019 10:20:00	Mech B/D
IM	Printing Press	Y		
IM	Printing Press2	Y		
IM	Shaper	N	30/04/2019 07:12:00	No Order
IM	Shaper2	Y		



By clicking this excel icon wherever you see, you can download the shown report to your computer as excel file

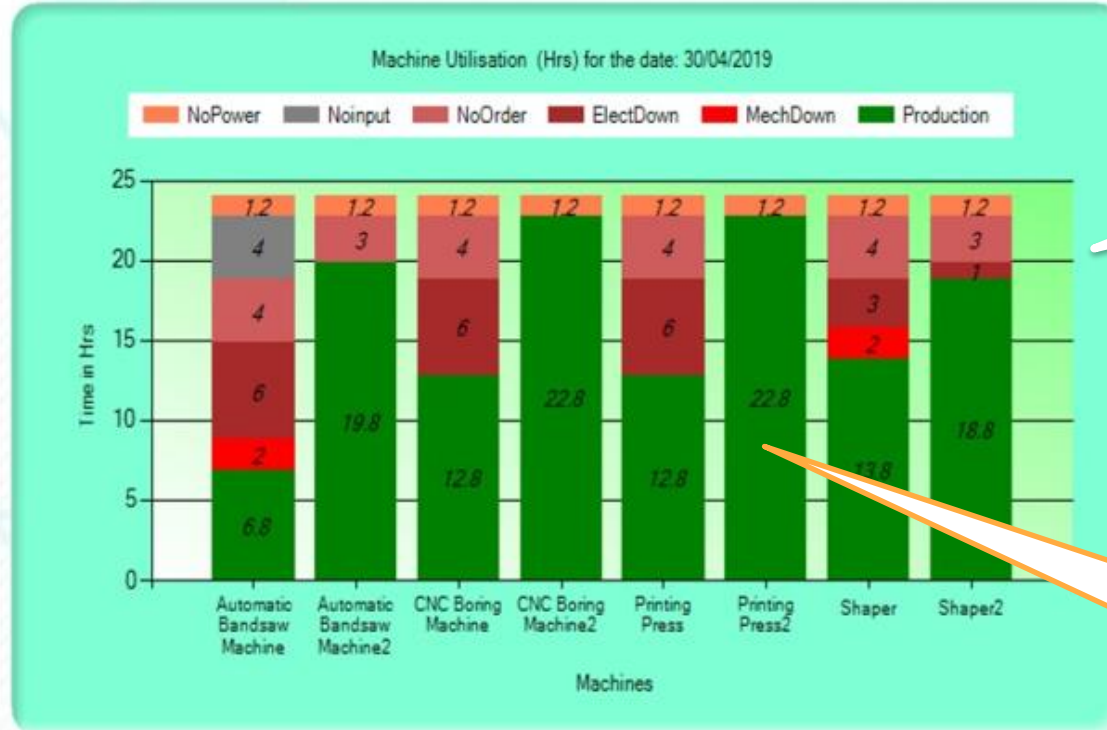
Machine Utilization Summary

From_Date 30/04/2019

To Date 30/04/2019

Run

Select any
Period for the
report



Each machine utilisation for 24 hrs is given in the chart including all type of downtimes.

No down time except 1.2 hrs of power failure.
Machine ran 22.8 hrs for production.
Highest machine utilisation!

Daily Production Report

Bold letter always shows the current screen

PRODUCTION (T)

DOWNTIME (T)

PRODUCTIVITY (T)

POWER FAILURE (T)

SALES (T)

ON-TIME-DESPATCH (T)

Plant
IM

Shift
All

Line ID
All

Product
All

Report
Day-Wise

From Date
01/04/2019

To Date
22/04/2019

Run

All our Graph automatically change the scale for easy reading



Production Trend (01/04/2019 - 22/04/2019) - Plant: IM

Date1	Produced Qty	Scrapped Qty
02/04/2019	20200	0
03/04/2019	20000	800
04/04/2019	20400	0
05/04/2019	19800	400

Productivity Report

[idle timeout in 1493 secs]

MAIN MENU

LOG OUT



BPA 3.4

Bold letter always shows the current screen

CURRENT STATUS

FORECAST

PRODN SCHEDULE

PRODUCTIVITY

PRODN SUMMARY

Date

25/04/2019

Run

Productivity

	Date	Plant ID	Machine	Throughput	Productivity
+	25/04/2019	IM	Automatic Bandsaw Machine	714.3	541.7
+	25/04/2019	IM	Automatic Bandsaw Machine2	370.0	308.3
-	25/04/2019	IM	CNC Boring Machine	502.1	491.7
			Operator	Throughput	Productivity
			Guna	250	250
			Ram	247	242
+	25/04/2019	IM	CNC Boring Machine2	533.3	300.0
+	25/04/2019	IM	Printing Press	839.0	820.8
+	25/04/2019	IM	Printing Press2	733.3	412.5
+	25/04/2019	IM	Shaper	548.7	445.8

Productivity Report

Business Process Automation

- Productivity trend -

FORECAST REPORT

PRODUCTION SUMMARY REPORT

DOWNTIME REPORT

PRODUCTIVITY REPORT

OPERATORS PERFORMANCE ANALYSIS

UNDER CAPACITY ANALYSIS

PRODUCTIVITY TREND CHART

DOWNTIME TREND CHART

Option

Plant

Shift

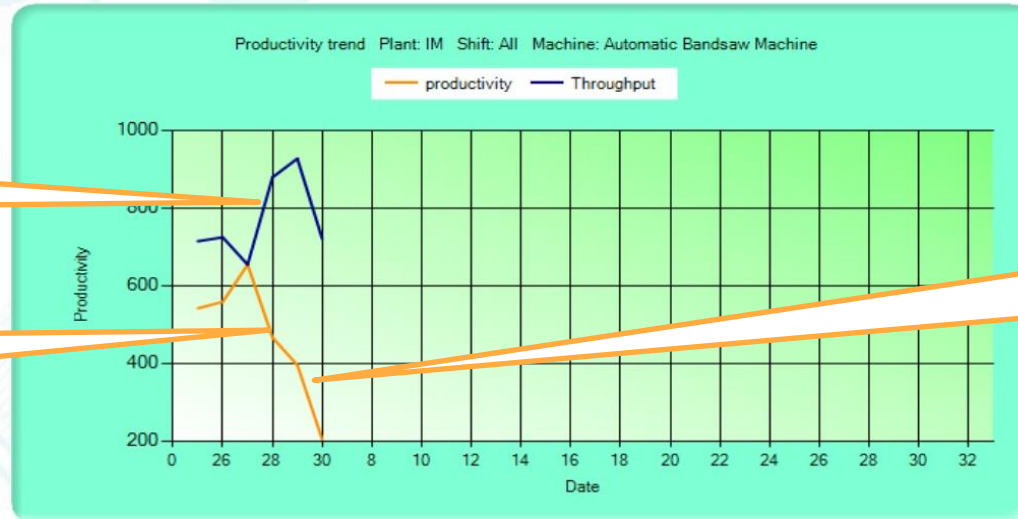
From Date

To Date

Machine

Indicates
Operator
efficiency

Indicates
Management
efficiency



Select your option
combination and
press run button

Productivity of automatic
Band saw machine is
going on reducing .
Need analysis and
action plan to improve

Downtime Report

PRODUCTION (T)

DOWNTIME (T)

PRODUCTIVITY (T)

POWER FAILURE (T)

SALES (T)

ON-TIME DESPATCH (T)

Report
Day-Wise

Plant
IM

Shift
All

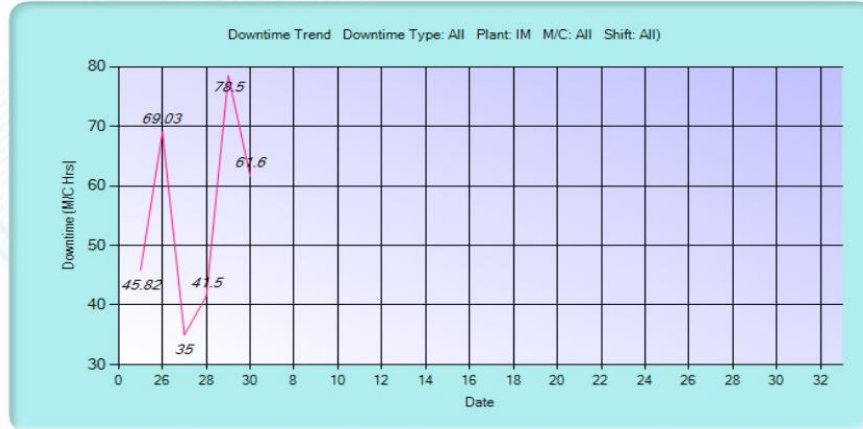
From Date
25/04/2019

To Date
30/04/2019

Downtime
All

Machine
All

Run



Downtime Trend

Date	Downtime (M/C Hrs)
25/04/2019	45.82
26/04/2019	69.03
27/04/2019	35.00
28/04/2019	41.50
29/04/2019	78.50
30/04/2019	67.60

Month-wise Power Failure Report

BPA 3.4

PRODUCTION (T)

DOWNTIME (T)

PRODUCTIVITY (T)

POWER FAILURE (T)

SALES (T)

ON TIME DESPATCH (T)

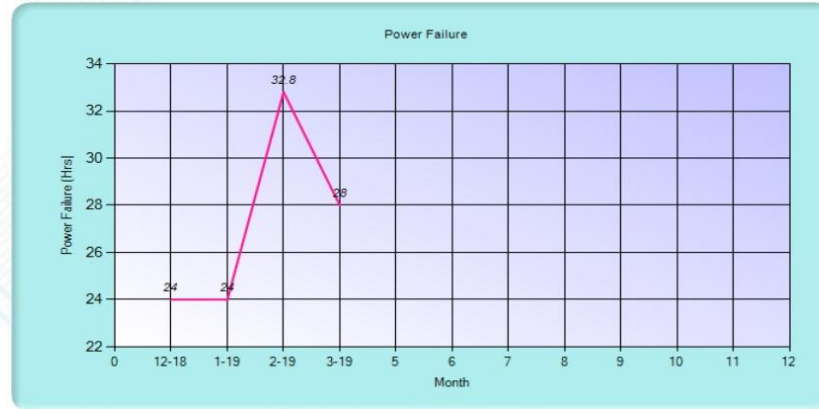
From Date

01/12/2018

To Date

31/03/2019

Run



Power Failure Trend

Month	Year	Power Failure (Hrs)
12	2018	24.00
1	2019	24.00
2	2019	32.80
3	2019	28.00
Total		109.00

Planning Efficiency

[idle timeout in 1477 secs]

MAIN MENU

LOG OUT



BPA 3.4

PLANNING (R)

SCHEDULE (A)

DESPATCH (R)

DESPATCH (P)

OPERATOR (P)

UNDER CAPACITY

From Date

10/03/2019

To Date

10/04/2019

Run

Planning Efficiency

Customer	Product Name	Customer Order No	Qty Needed	Qty Planned	Planned On	Needed On	Expected End On	Delay (Days)
Loreal India Pvt Ltd (Baddi)	ALU TUBE CASTING CREME (BPA FREE) (PINK BASE) 47.5GM 3605054648726	3456	4000	4000	05/04/2019	08/03/2019	06/04/2019	29
Loreal India Pvt Ltd (Baddi)	ALU TUBE CASTING CREME (BPA FREE) (PINK BASE) 16GM 3605054648771	DE1234	5000	50000	12/03/2019	13/03/2019	14/03/2019	1
Loreal India Pvt Ltd (Baddi)	ALU TUBE CASTING CREME (BPA FREE) (PINK BASE) 16GM 3605054648771	9089	45000	45000	14/03/2019	23/03/2019	16/03/2019	-7
Loreal India Pvt Ltd (Baddi)	ALU TUBE CASTING CREME (BPA FREE) (PINK BASE) 16GM 3605054648771	565656	10000	10000	16/03/2019	25/03/2019	17/03/2019	-8



On-Time Despatch Report

[idle timeout in 1492 secs]

MAIN MENU

LOG OUT



BPA 3.4

PLANNING (R)

SCHEDULE (A)

DESPATCH (R)

DESPATCH (P)

OPERATOR (P)

UNDER CAPACITY

Month

Apr '19

Run

On-Time Despatch

Customer	On-Time Despatch %
Cus1	50
Cus2	50
Cus3	50
Cus4	33



Despatch Performance

[idle timeout in 1475 secs]



BPA 3.4

PLANNING (R)

SCHEDULE (A)

DESPATCH (R)

DESPATCH (P)

OPERATOR (P)

UNDER CAPACITY

Month

Apr '19

Run

Despatch performance (All Customers)

Customer	Product	Qty Needed	Needed On	Entered By	Entered On	Delivery Date	Delay (Days)
Cus4	Pd2	40000	09/04/2019	Ram	24/04/2019	11/04/2019	2
Cus1	Pd1	25000	13/04/2019	Suki	25/04/2019	12/04/2019	-1
Cus1	Pd2	25000	15/04/2019	Suki	25/04/2019	16/04/2019	1
Cus4	Pd2	20000	17/04/2019	Ram	24/04/2019	19/04/2019	2
Cus2	Pd1	15000	18/04/2019	Suki	25/04/2019	18/04/2019	0
Cus3	Pd3	30000	19/04/2019	sandanam	24/04/2019	22/04/2019	3
Cus2	Pd2	20000	22/04/2019	Suki	12/05/2019	23/04/2019	1
Cus3	Pd3	40000	25/04/2019	sandanam	07/05/2019	25/04/2019	0
Cus4	Pd2	30000	29/04/2019	Ram	28/04/2019	29/04/2019	0



Operator Performance



BPA 3.4

PLANNING (R)

SCHEDULE (A)

DESPATCH (R)

DESPATCH (P)

OPERATOR (P)

UNDER CAPACITY

Plant
IM ▼

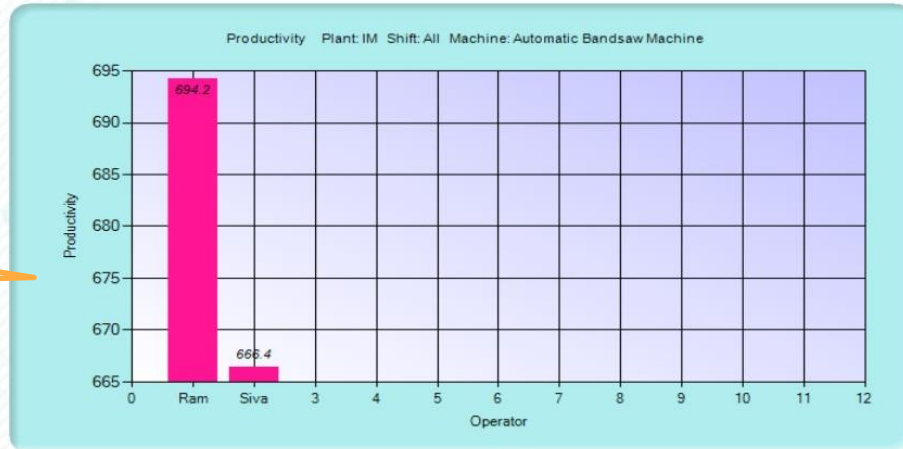
From Date
01/12/2018

To Date
31/03/2019

Machine
Automatic Bands: ▼

Run

Productivity of two operators operating a particular machine/line



Under Capacity Analysis

[idle timeout in 1481 secs]

MAIN MENU

LOG OUT



BPA 3.4

PLANNING (R)

SCHEDULE (A)

DESPATCH (R)

DESPATCH (P)

OPERATOR (P)

UNDER CAPACITY

Plant
IM

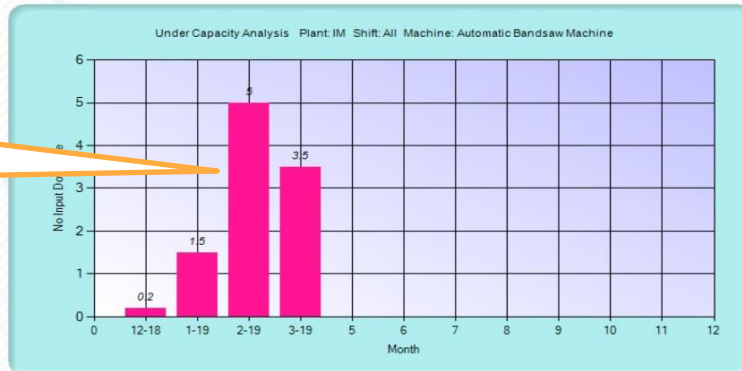
From Date
01/12/2018

To Date
31/03/2019

Machine
Automatic Bands

Run

Month-wise
Line/Machine Idle
time for want of
order



Price & Payment

Srl No	Description	Annual Lease (advance payment)	One Time Purchase (to be paid after the activity)
1	Hosting charges for one year (along with order)	-NA-	30,000
2	After issuing login password as needed by you (max. 30) You can enter master data at this stage (includes 1 years free hosting, backup and maintenance)	NIL	50,000
3	Sales Management	12,000	
4	Production Planning	-NA-	50,000
5	Material Planning	10,000	
6	Purchase	10,000	
7	Shop Floor (Production) Management Implementation	-NA-	4,50,000
8	Quality Management Implementation	10,000	
9	Inventory Management (Stores) Implementation	10,000	
10	Payroll Implementation	-NA-	40,000
11	Maintenance Management Implementation	20,000	
12	Calibration Management	15,000	
13	Finance (to be quoted after discussing what exactly customer needs as many uses tally like software already)		

**Conveyance by Air/Taxi, Stay, Food Expenses are extra in case of site visit in whatever option you go for.
All hardware like scanners , tab, computers, ID cards with barcode are organized by you at your cost.*

Price is Fixed & Non-Negotiable

Price & Payment

S.No	Description	Price (₹)
14	Discount for additional license for the <u>same customer</u> for different sites/different server (for one time purchase case alone)	60%
15	Annual charges for each additional Login	500
16	One time purchase of lease module is 5 times the annual lease amount for installing in customer local machine.	
AMC Option 1	AMC charges (including hosting) for continuing with our cloud server	30,000
AMC Option 2	AMC charges per year per installation (max 3 visit) (if you are going to install in your server)	20,000
Non-AMC	Service charges per day (time starts from leaving Pondicherry and back) (if you are going to install in your server)	10,000
<p><i>*Conveyance by Air/Taxi, Stay, Food Expenses are extra in case of site visit in whatever option you go for. All hardware like scanners , tab, computers, ID cards with barcode are organized by you at your cost.</i></p> <p><i>Any specific customization required will also be done at extra cost</i></p> <p>Price is Fixed & Non-Negotiable</p>		

For more information please get in touch with us,



- ❖ Mobile : 900-3930-729 (J.Shanmugam)
- ❖ Email : issconnect@gmail.com
- ❖ Website : www.viewiss.com

My Short profile

Name: J Shanmugam, Electrical Engr with MBA in Operations Mgmt.
PG Diploma in Finance Mgmt.

Industries Exposed: 30 Years Experience - Worked in Steel, Cement, Engineering, Textile, Heavy Chemicals and Plastics. Retired as Sr. Vice President (Operations) from 500cr turnover company, managed 3 sites across the country along with corporate sourcing.

Areas Handled: Operations Mgmt., Budget Control, Projects Mgmt., Sourcing mgmt., Human Resource mgmt.

Current Activities: Consultancy, Software Development

Consultancies Done: TPM consultancy to JK Pharma, Cuddalore
TPM consultancy to Thirumalai Chemicals, Ranipet.
Power factor improvement in AT&S, Mysore.
Project Mgmt. in Kingfa Science & Tech., Pune.

Papers Published/ Presented

- Computerized Maintenance Management System.
- Energy Conservation by optimizing cables.
- 5S Implementation.
- Power Factor improvement design.

Training/Guest Lecturers

- Advanced Maintenance Management – 1 week residential program in Neyveli Lignite Corporation (NLC) for their executives.
- Change Management – For senior managers in NLC.
- Change Management, TPM in JK Pharma.
- Visual Control of TPM - Asian Paints .
- Power Factor Improvement - AT&S, Mysore.
- Business Management for Engineering colleges.

Paper Presentation – Computer's Role in MMS



ARTICLE

Role of Computer in Maintenance Management

J Shanmugam, Tanfac Industries Ltd, Cuddalore

1. Introduction

Business today has entered into an entirely new era of competition from multi-nationals due to the country's new policies of opening the economy to the rest of the world, liberalisation of business policies, removal of protection to Indian companies on one hand and international activities like WTO forcing countries towards global business regulations on the other hand.

Countries in the world become more dependent on each other immaterial of whether they are developed or developing one, although the developed countries have better leverage. This means, today, any country has left with little flexibility to deviate from international business in terms of policies and strategies.

The information technology has grown to the extent that without computer, no business organisation can survive today

Thanks to Science and Technology which has contributed to the enormous growth in the area of Communications and Transport which in turn fueled the above activities. The information technology has grown to the extent that without computer, no business organisation can survive today. Therefore, it is wise to effectively use computers even in the areas where they are not conventionally used. One such area is "MAINTENANCE MANAGEMENT" in industries. This article aims to expose the crucial role that a computer can play in Maintenance Management.

2. Implication to Developing Countries

This business environment of today generates few implications to developing countries with positive as well as negative impacts.

3. Positive Impacts

- Opportunities for an organisation with high competence due to the liberalisation by government. (eg. even small organisations have shown high growth).
- Opportunity for quantum jump into latest technology which means reduced cost and improved quality.
- Opportunity to go for world size plant to reduce the cost through more and more automation with high technology to compete easily in the international market (eg. Reliance Petrochemicals)
- Opportunity to utilise cheaper human resource (eg. Software industries).

Handwritten: Ho / Mr. Shanmugam, For info. regy. FAX TRANSMISSION 30/10

TO	SHRI M. H. UPADHYAYAJI JT. PRESIDENT TANFAC, CUDDALORE 04142 - 39007/ 39008	FROM	K. G. ASWANI EXECUTIVE PRESIDENT CTC - VADODARA 0091 - 0255 - 313 427
FAX IF PAGES	1 INCLUDING THIS PAGE	FAX DATE	OCTOBER 28 1998

Handwritten: cc: Mr. Shanmugam

SUB: A TECHNICAL PAPER AND AN ARTICLE PRESENTED BY MR. J. SHANMUGAM

REF: LETTER 2491 DATED 5TH OCTOBER

WE ARE IN RECEIPT OF A TECHNICAL PAPER AND AN ARTICLE PUBLISHED BY MR. J. SHANMUGAM AND THANK YOU FOR THE SAME. BOTH THE PAPERS ARE THOUGHT PROVOKING AND HIGHLY RELEVANT IN TODAY'S CONTEXT. WE WILL CIRCULATE CONTENTS OF THESE PAPERS TO CONCERNED GROUP UNITS.

MANY OF OUR GROUP UNITS ARE IN PROCESS OF COMPUTERISING THEIR MAINTENANCE FUNCTION AND WE WOULD LIKE TO KNOW IF MR. J. SHANMUGAM'S EXPERTISE CAN BE MADE AVAILABLE TO THEM UPON REQUEST.

REGARDS,

Handwritten signature: K. G. ASWANI

Handwritten: Please ignore our message abt 28.10.1998 sent earlier. Error is rectified.

Paper Presentation – Power Factor Improvement

WE WORK FOR PEOPLE

AT&S

AT&S INDIA LIMITED
12/A, Industrial Area,
Nanjangud-571301,
Mysore Dist.
Karnataka, India.
Tel : +91/8221/26375
Fax : +91/8221/26641-42
http://www.atpcb.com

6th August 1999

Mr. J. Shanmugam
Sr. Manager (Operations)
Hydro S&S Industries Limited
Padukkottai
Tamilnadu – 622002.

Dear Mr. Shanmugam,

Ref : Your publication with electrical engineering update ISSN 0971-5479 May-June 1999 Vol-7 No.3 Page 52-57.
Sub : POWER FACTOR IMPROVEMENT – NEEDS, STRATEGIES AND BENEFITS.

Your total database detailed project information could give us a strength to pick up the dropped project during 1996.

You could throw total light into this subject in presenting the case to top management and execution with precaution.

Subject seems to be dry, common but generally people try to neglect. Your total information could give us such a courage to us that we would like to execute the project with your novel, detailed, deep study and steps.

As generally, said, education is for actions but not for knowledge. Kindly help us to execute the same project in our plant in case of requirement. We would like to contact you. Hoping to receive the support from your end.

With all above informations I invite you to our plant to present the subject to Nanjangud Industrial Area people.

Hope to receive a favourable reply from your end.

We await for your reply.

Best Regards,
B.K. Sudhar Naik
B.K. Sudhar Naik

Mr. J. Shanmugam
Manager (E&I)
Tanfac Industries Ltd.,
14 SIPCOT Indl. Complex
Cuddalore - 607 005
Tamil Nadu

High-Tech Publishing
Private Limited

128, Explorade Mansion, Fire Floor,
144, M.G. Road, Mumbai - 401 001 (INDIA)
Phones : 2825524 + 2821578
Fax : (91-22) 2825295

Ref : HT/9/REM/98
Date : 1/12/98

Dear Mr. Shanmugam,

It was nice of you to have sent us a paper on

"Cost optimisation through ... sizing"

to **Engineering Advances**. This was carried in Oct. '98 Issue, a copy of which has been sent you separately.

In appreciation of your contribution, we take pleasure in enclosing a nominal honorarium.

Please do continue to send such contributions. They are sure to enrich this magazine.

Best wishes,

Yours sincerely
For **ENGINEERING ADVANCES**

P.K. Balasubramanian

P.K. Balasubramanian
Managing Director & Chief Editor

Encl : * Cheque No. 252296 dated 1-12-98 for
Rs. 1,000/- drawn on The Lakshmi Vilas Bank Ltd.

engineering

ELECTRICAL ENGINEERING
UPDATE

innovative solutions

Engineering

Paper Presentation – 5S



ARTICLE



5S - The Effective Tool to Improve the Work Place

J Shanmugam
Hydro S & S Industries Ltd, Tamil Nadu

Introduction

The concept of 5S traces its home to Japan where it revolutionised the industries, before the world came to know about it. To introduce in general, it is a micro management concept of work place to transform the shop floor to Living Room Factories, Clean Room Facilities, etc. In another angle, it is a behavioral science to systemise/discipline individual behavior in the shop floor.

Today, organizations whether they are in developed countries or in developing countries start understanding the need for 5S and its longterm impact on bottom lines of organizations.

The aim of this article is not to explain what is 5S in detail as many of the readers know about it, but to impress some of the critical aspects of it and to share few practical implementation aspects.

Definition

To define the 5S in simple words, it is organizing the work place, keeping it neat and clean, standardizing for easy maintenance of work place and developing self discipline among the people to sustaining these activities by themselves.

Let us now look in to the Goals, approaches and Benefits of 5S.

The 1st S - SEIRI (Organising)

The Meaning and Goal

SEIRI is a Japanese word which means Organising. This is the first step of 5S implementation. Its essential goals are to

- Discard all unwanted/unnecessary items and
- Deal with sources/generation of the unwanted items with the aim to eliminate them at the point of generation/source itself.

The Benefits

- Extra space.
- Easy identification of required material.
- Facilitates for better arrangement and organised look.
- Saves time, cost and space in maintaining unwanted items.
- Forces us to focus and act on generation of unwanted items.

Typical Activities

As explained earlier, the aim of 1st 'S' is in two folds. While the primary aim is to remove unnecessary items, the secondary aim is to control their generation. Therefore, the activities in '1S' should meet these aims. The typical activities are:

- Removing things that you do not need.
- Carrying out House cleaning.

- Organising the Workplace.
- Studying the source of each and every Unwanted to reduce their generation.

Potential Locations for 1st S

Over a period of implementation experiences of 5S, there are potential areas to look for unnecessary which we normally never look at. To help the implementers to train eyes in these areas, few typical locations are given hereunder:

- Shelves and lockers.
- Work bench area and machine surroundings.
- Besides pillars, under stairs.
- Partitions, pits and floors.
- Store houses and sheds.
- Walls, roof corners, roofs.
- Notice boards.

How to Sortify

Unwanted item passes various stages based on their aging before becoming unwanted. Hence we need to adopt an effective strategy in sortification of unwanted so that it will be easy to handle them in future and to use them in between if needed. A sample strategy is given below:

Group	Frequency of use	Sortifying strategy
1.	More than 2 years	Discard
2.	6 Months to 2 years	Store at remote place
3.	3 months to 6 months	Store in a central place near worksite
4.	Less than 3 months	Close to the work place for easy access and handling

This approach facilitates for easy shifting of items from group 4 to 3, 3 to 2 and 2 to 1 without further analysis after the passage

ENERGY MANAGEMENT CELL



Confederation of Indian Industry

Southern Regional Headquarters
35/1, Ashramamapuram 3rd Street, Alwarpet, Chennai - 600 018.
Tel : (Dir) 466 0430 / 466 0201 / 466 0570 / 466 1311 / 466 0773
Fax : 91-044-466 0312 E-Mail : s.raghupathy@ciionline.org
Website : www.energyefficiency-cii.com

K VASUDEVAN

Chairman

Energy & Power Sub-Committee, CII (SR)

18th December, 2000

Dear Mr. Shanmugam,

NATIONAL SEMINAR ON "MOTORS"

I am writing to thank you for your participation at the National Seminar on Motors held at Chennai on 30th November and 1st December, 2000.

Your presentation on "Computerised Maintenance Management System" was excellent and very much appreciated by the delegates. Kindly accept my compliments on the excellent presentation.

Judging by the feedback from participants, the seminar was an extremely well received event.

Thank you once again for being a part of the National Seminar. Your contribution has helped to make this Seminar a grand success.

With kind regards,

Yours sincerely

K. Vasudevan
K VASUDEVAN

Mr J Shanmugam

DGM - Maint.

Hydro S & S Industries Limited

Plot No. 15C

Sipcot Industrial Complex

Pudukkottai - 622 002

*cc: V.P(O) for info
D(F) ph
k*

*Mr. J. Shanmugam
Sm(O)
congrats. Wish you
many more accolades
K. Subramanian
Gm(W)*

Regional Offices: Calcutta • Chandigarh • Chennai • Mumbai

State / Zonal Offices: Ahmedabad • Bangalore • Bhopal • Bhubaneswar • Coimbatore • Guwahati • Hyderabad • Indore

Jipur • Jamshedpur • Kochi • Lucknow • Madurai • Mysore • New Delhi • Panaji • Pune • Shimla

International Offices: Johannesburg • Kathmandu • Kohn • London • Paris • Singapore • Tashkent • Washington

Paper Presentation – Cost Optimization

