

COMPUTERISED MAINTENANCE MANAGEMENT SYSTEM

cmms.viewiss.com



INNOVATIVE SOFT SOLUTIONS

WWW.VIEWISS.COM

Maintenance Management Goals

- ✓ Extend the life of Machines in the Plant
 - to minimize their wear and tear.
 - to postponed the investment on replacement.
- ✓ Increase the availability of machine for production
 - to smoothly operate the plant.
 - to increase the productivity.
 - to avoid rescheduling of production and timely supply to customers.
 - to eliminate unnecessary overtime to met the time schedule.
- ✓ Avoid unexpected breakdowns
 - to eliminate production disturbances.
 - to reduce the Maintenance Cost.
- ✓ Improve the Productivity , Quality and Safety of personnel
 - by maintaining machine in their good operating condition
- ✓ Compliance with Regulations
 - to avoid legal complication like penalty, plant closure.

**To improve Reliability, Availability and Maintainability
You need a software to efficiently manage with less effort**

Software Features

- ✓ **Least human intervention is the goal of this software** – It automatically updates P/M, C/M, pending work Plans. Data entry forms are pre-filled wherever possible. Hence human error is kept to a minimum and reduces data entry time & effort.
- ✓ **Business Logic Module - the brain of our software, stores all your business logics, rules & procedures and controls the system!**
- ✓ A Windows 10 system having Wi-Fi / LAN connection is sufficient to use as server. There is no need for any other high-end Computer/Server.
- ✓ Entire organization can access live status on maintenance at anytime.
- ✓ **Live Reports** in your mobile/computer at all times – 24x7 across the year.
- ✓ Dashboard to show the entire Maintenance performance in single page with trend charts.
- ✓ Powerful & Live Analytical reports available to the management for making right decisions.
- ✓ All reports can be downloaded in to your computer in **Excel/PDF format**.

Software Features

- ✓ Our software employs **Responsive Web Design** & can be accessed through Computer, Tablets, Mobile phones.
- ✓ Highly secured, with user-based restriction to access information that **can be set or altered at anytime by the System Administrator in your organization without our involvement.**
- ✓ As an option, it can also be hosted & maintained by us in **cloud server**. You can access the data from anywhere across the world! More suited for -
 - Organizations with multi-plant locations spread across wider geographical area with central control.
 - Medium/Small organizations where it is not economical to install & maintain it at their end.
- ✓ No need for any other communication methods like Email, Phone etc., for information sharing.
- ✓ Automatically generate weekly/monthly schedules for different maintenance types.
- ✓ Calculates and displays **MTBF & MTTR** for each equipment as on date.
- ✓ Generates **graphical reports** on trends on various parameters for managerial decisions.
- ✓ Top Management can see all the department reports while individual department personnel can only see his department data.

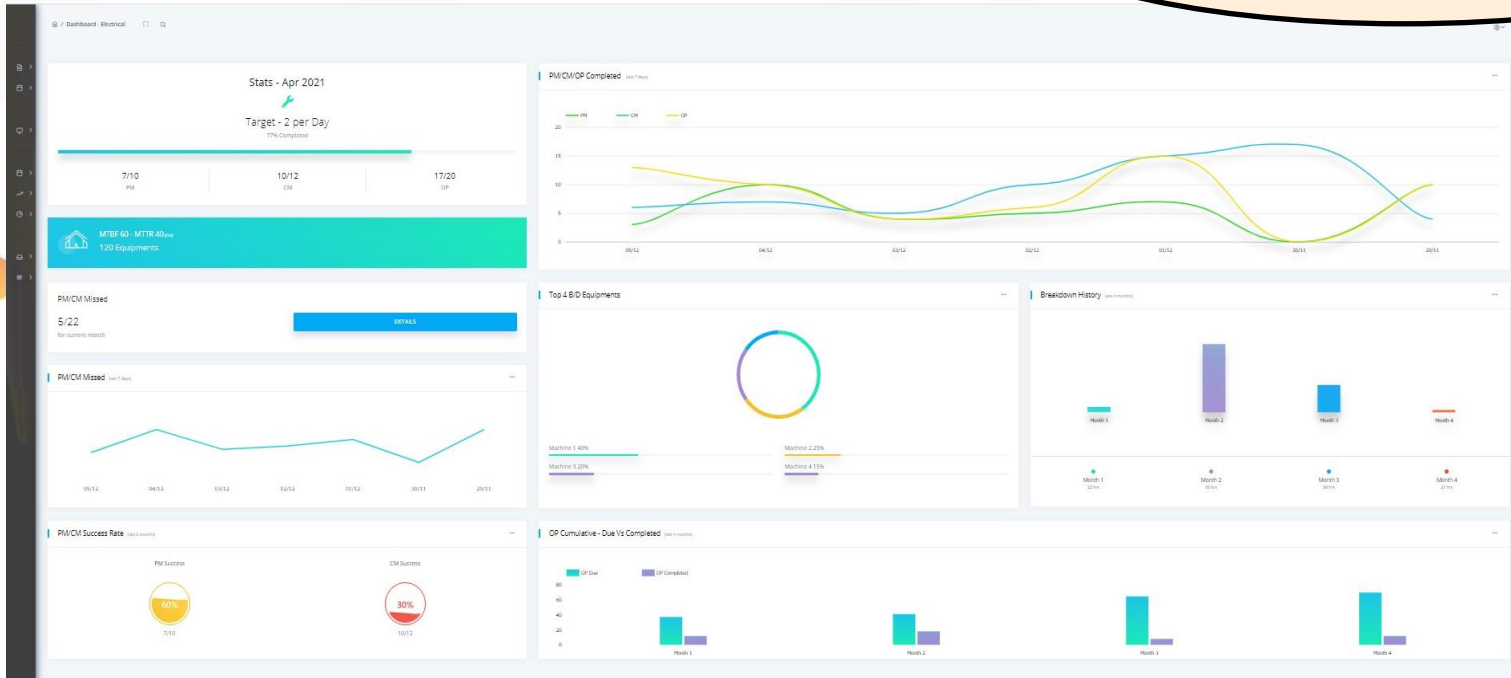
The background is a light cream color with various abstract shapes. There are several large, light grey, rounded rectangular shapes scattered across the page. Interspersed among these are smaller orange circles of different sizes, some with a gradient. There are also several grey circles of varying diameters. A few grey circles are arranged in small clusters. A single orange triangle is located in the upper right quadrant. A small orange 'x' mark is positioned in the upper right area. A circular shape with diagonal grey and white stripes is located in the lower right quadrant. The overall aesthetic is clean and modern.

REPORTS

-Dashboard-

Dashboard

This page appears automatically whenever you login into the software to show you the complete Maintenance performance in single page thro various charts



To cover all the reports, the size shown here in the presentation is very small compared to the actual size.

Each component will be explained separately in next slides

Dashboard

Stats - Mar 2021



Target - 5 per Day

77% Completed



21/30

PM

30/36

CM

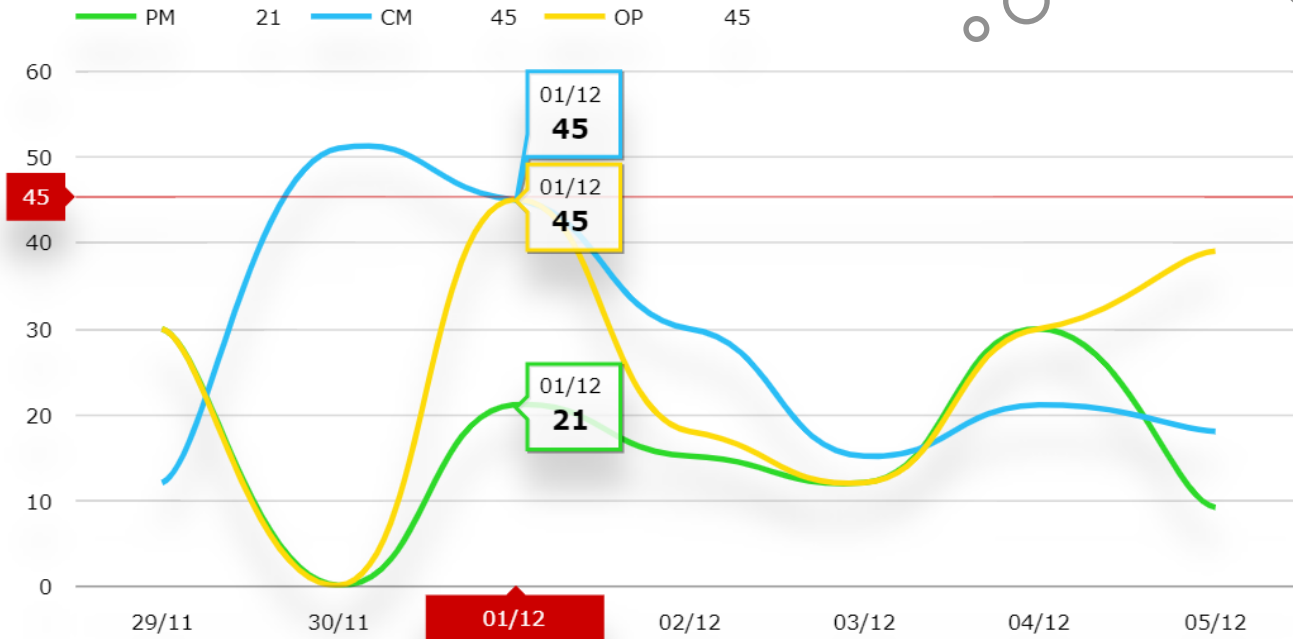
51/60

OP

This shows current month maintenance
Job planned Vs
completed till date

Dashboard

PM/CM/OP Completed (last 7 days)



By moving your cursor on the chart column, will display the value as shown.

Dashboard

PM/CM Missed

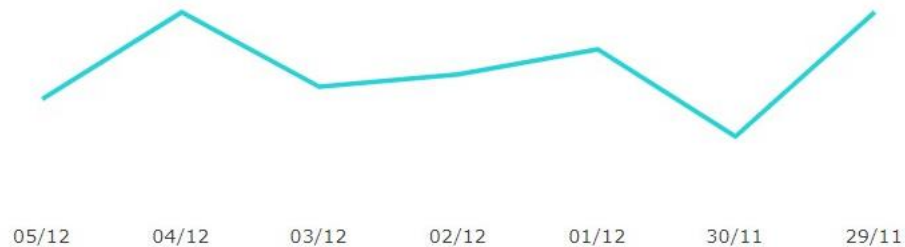
5/22

for current month

DETAILS

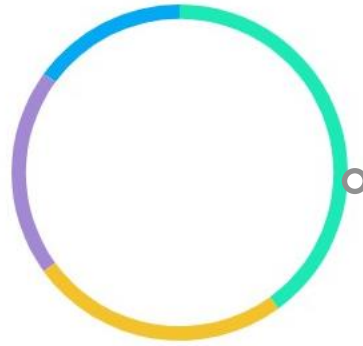
Shows current month
PM and CM Missed
as on date

PM/CM Missed (last 7 days)



Dashboard

Top 4 B/D Equipments



By moving your cursor on any segment on the chart will display the value.

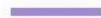
Machine 1 40%



Machine 2 25%



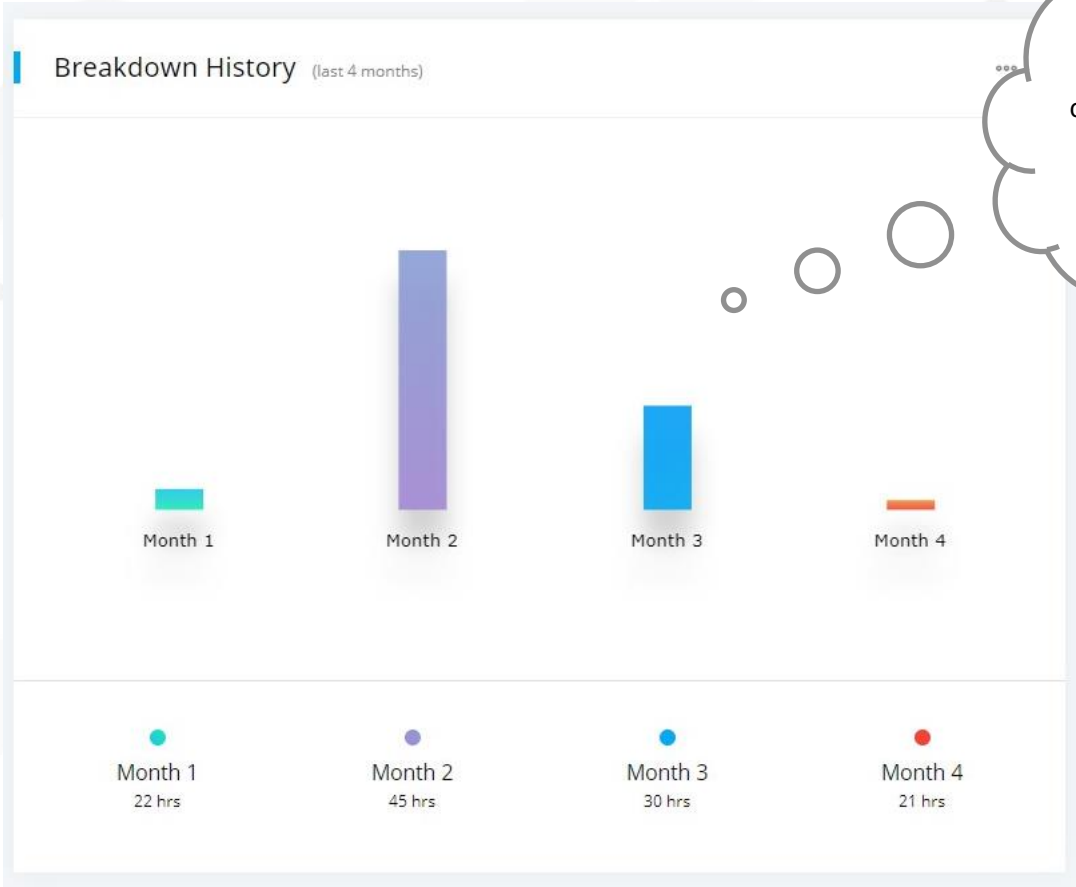
Machine 3 20%



Machine 4 15%



Dashboard



By moving your cursor on the chart on each bar will display the value.

Dashboard

PM/CM Success Rate (last 6 months)



PM Success



7/10

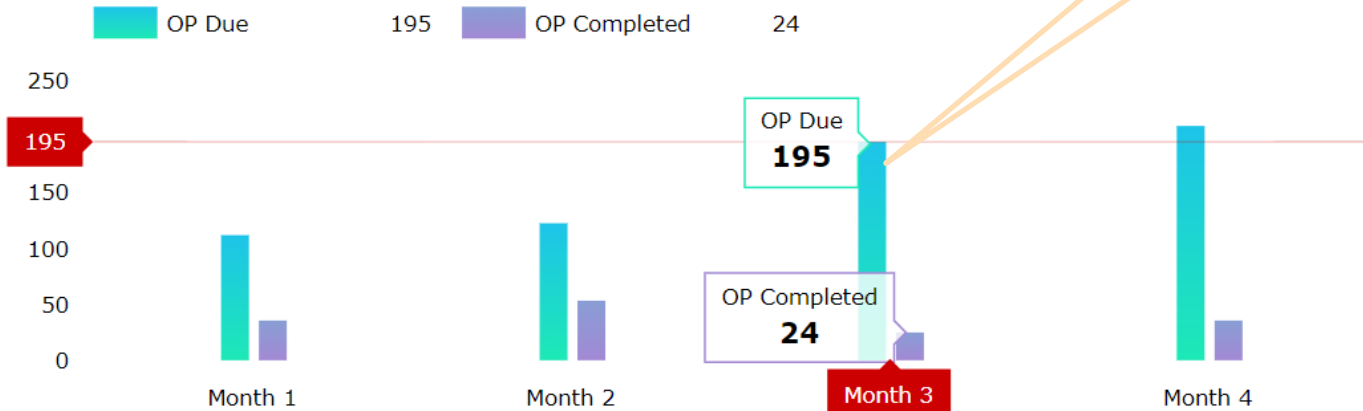
CM Success



10/12

Dashboard

OP Due Vs Completed (last 4 months) cumulative



The background is a light gray and white abstract composition. It features various geometric elements: large, soft-edged light gray shapes; smaller circles and dots in shades of orange and gray; some circles with diagonal hatching; and a small orange triangle and 'x' mark. The overall style is clean and modern.

DETAILED REPORTS

PM Report

Preventive Maintenance Report

Department*

Elec

Plant*

All

Period*

02-03-2021

30-04-2021

FIND

Click to download pdf file

Click to download excel file

Search the report for a particular Eqpt by typing here

Click to print directly on connected Printer

PM Report - (Dept: Elec) (02-03-2021 - 30-04-2021)



Department ▼	Plant ▼	Location ▼	EqptID ▼	Remarks ▼	PendingWork ▼
Elec	H2SO4 PLANT	Acid Circulation Pump 2 ACP-2	ACP-2	Done	
Elec	H2SO4 PLANT	Storage tank ST	Loading Pump	Bearing sound is coming. replaced	
Elec	COOLING TOWER	Cooling Water Pump CWP-2	CWP-2	Dome	Need reglading at motor 1
Elec	H2SO4 PLANT	Sulphur pump 1 SP-1	SP-1	Done	
Elec	H2SO4 PLANT	Sulphur pump 2 SP-2	SP-2	Done	
Elec	COOLING TOWER	Cooling Tower Fan CF200	CF200	Vibration noticed . In next opportunity it is to be changed.	Bearing need replacemer

CM Report

CM Report - (Dept: Elec) (01-03-2021 - 31-03-2021)

   Eqpt ID... 

Department ▼	Plant ▼	Location ▼	EqptID ▼	Remarks ▼	PendingWork ▼	HrsNeeded ▼	ProdnAffectedM
Elec	H2SO4 PLANT	Sulphur pump 1 SP-1	SP-1	done			0
Elec	H2SO4 PLANT	Storage tank ST	Loading Pump	done			0
Elec	COOLING TOWER	Cooling Tower Pump CP200	CP200	done			0
Elec	COOLING TOWER	Cooling Water Pump CWP-2	CWP-2	done			0
Elec	COOLING TOWER	Cooling Tower Fan CF200	CF200	done	cable need to be re-terminated. Need to dig the ground to release excess length	5	0
Elec	H2SO4 PLANT	Acid Circulation Pump 1 ACP-1	ACP-1	done			0

Page Size 10 ▼

Opportunity Maintenance Report

Opportunity Maintenance Report

Department* Plant* Completed Period*

Elec COOLING TOWE All 01-03-2021 02-04-2021

FIND RESET

OM Report

You can select no of records to display in single page

   Eqpt ID... 

Department	Plant	Location	EqptID	ActionToBeTaken	ActionTaker
Elec	COOLING TOWER	Cooling Tower Fan CF200	CF200	cable need to be re-terminated. Need to dig the ground and release excess length	
Elec	COOLING TOWER	Cooling Tower Fan CF200	CF200	Bearing need replacement	
Elec	COOLING TOWER	Cooling Water Pump CWP-2	CWP-2	Need reglading at motor terminal box	

B/D Report

Preventive Maintenance Report

Department*

Plant*

Period*

FIND

RESET

PM Report - (Dept: Elec) (02-03-2021 - 30-04-2021)

Many more columns are there. Pl visit demo site to see them all.



Eqpt ID...



Department ▼	Plant ▼	Location ▼	EqptID ▼	Remarks ▼	PendingWork ▼
Elec	H2SO4 PLANT	Acid Circulation Pump 2 ACP-2	ACP-2	Done	
Elec	H2SO4 PLANT	Storage tank ST	Loading Pump	Bearing sound is coming. replaced	
Elec	COOLING TOWER	Cooling Water Pump CWP-2	CWP-2	Done	Need reglading at motor 1
Elec	H2SO4 PLANT	Sulphur pump 1 SP-1	SP-1	Done	
Elec	H2SO4 PLANT	Sulphur pump 2 SP-2	SP-2	Done	
Elec	COOLING TOWER	Cooling Tower Fan CF200	CF200	Vibration noticed . In next opportunity it is to be changed.	Bearing need replacemen

S/D Report

Shutdown Maintenance Report

Department*

Elec

Plant*

All

S/D Date*

02/02/2021

FIND

RESET

Only one job is completed as on today.

SD Report (Dept: Elec Plant: All SD Date: 02/02/2021)

Eqpt ID...

Plant	Location	EqptID	ActionTaken	PlannedOn	Responsibility	Completed	CompletionDate
H2SO4 PLANT	Acid Circulation Pump 1 ACP-1	ACP-1		02/02/21	Ram E	N	
H2SO4 PLANT	Acid Circulation Pump 2 ACP-2	ACP-2	Bearing Replace and Overhauled.	02/02/21	Raghu E	Y	02/02/21
H2SO4 PLANT	Sulphur burner SB	Air Blower		02/02/21	Sundhar E	N	
H2SO4 PLANT	Sulphur pump 1 SP-1	SP-1		03/02/21	Raghu E	N	
H2SO4 PLANT	Sulphur pump 2 SP-2	SP-2		03/02/21	Sundhar E	N	

Page Size 10

CMMS 3.2.1

MAINTENANCE JOBS

Planning

Feedback

WORKSHOP

Detailed Stats

REPORTS

History

Preventive Maintenance

Condition Monitoring

Opportunity Maintenance

Breakdown Maintenance

Shutdown Maintenance

Trend Charts

Analytical

MASTERS

Maintenance History Report

Only one Eqpt is selected for longer period. All type of maintenance done on that Eqpt are listed out

CMMS 3.2.1





- MAINTENANCE JOBS
 - Planning
 - Feedback
- WORKSHOP
 - Detailed Stats
- REPORTS
 - History
 - Trend Charts
 - History Report
 - Downtime Trend
 - Analytical
- MASTERS
 - Basic Data
 - Reports

Maintenance History Report

Department* Plant* Eqpt ID* Maint Type Failure Code Reason Code

Prod Affected Period*

History Report (Dept: All) (Eqpt ID: 1) (01-01-2021 - 02-04-2021)

Date	Department	MaintType	Plant	Location	EqptID	FailureCode	ReasonCode	ActionTaken	DoneBy
05/01/2021	Elec	BD	H2SO4 PLANT	Acid Circulation Pump 1 ACP-1	ACP-1	Cable Failure	-None-	Reglanded and re-terminated	Raghu E
02/02/2021	Mech	SD	H2SO4 PLANT	Acid Circulation Pump 1 ACP-1	ACP-1			Painted, Greased	Siva M
03/02/2021	Elec	BD	H2SO4 PLANT	Acid Circulation Pump 1 ACP-1	ACP-1	Coil Burnt	Over Heat	Motor burnt, replaced	Raghu E
24/03/2021	Elec	BD	H2SO4 PLANT	Acid Circulation Pump 1 ACP-1	ACP-1	Motor End Termination Failed	-None-	Cable re terminated	Raghu E
29/03/2021	Elec	CM	H2SO4 PLANT	Acid Circulation Pump 1 ACP-1	ACP-1			done	Sundhar E

Plant/Location Master

CMMS 3.2.1

MAINTENANCE JOBS

- Planning >
- Feedback >

WORKSHOP

- Detailed Stats >

REPORTS

- History >
- Trend Charts >
- Analytical >

MASTERS

- Basic Data >
 - Plant/Location Master
 - Eqpt Master
 - Font > Spcr Name

Plant/Location Master

Plant* Location*

Maintenance Management System

Plant	Location	UserName	TimeStamp
COOLING TOWER	Cooling Tower Fan CF200	elec	29/03/2021 10:58:00
COOLING TOWER	Cooling Tower Pump CP200	elec	29/03/2021 09:52:00
COOLING TOWER	Cooling Water Pump CWP-1	elec	29/03/2021 10:21:00
COOLING TOWER	Cooling Water Pump CWP-2	elec	29/03/2021 10:21:00
H2SO4 PLANT	Sulphur pump 1 SP-1	elec	29/03/2021 09:53:00
H2SO4 PLANT	Sulphur pump 2 SP-2	elec	29/03/2021 09:53:00

Whenever data is entered or edited the software automatically captures the time of action and who did it. This can't be edited by anybody.

Therefore we will know who entered the data at anytime !

Equipment Specification

The screenshot displays the CMMS 3.2.1 interface. On the left is a dark sidebar with navigation options: MAINTENANCE JOBS (Planning, Feedback), WORKSHOP (Detailed Stats), REPORTS (History, Trend Charts, Analytical), and MASTERS (Basic Data, Plant/Location Master, Eqpt Master, Eqpt > Spec Name, Eqpt > Spec). The main content area shows the breadcrumb path: Dashboard / Masters / Eqpt Spec Name. Below this is the 'Eqpt Spec Name Master' form, which includes a 'Department*' dropdown menu with 'Inst' selected, and 'FIND' and 'SAVE' buttons. A callout box points to the table below, stating: 'You can define any spec names for each type of equipment as you like. Highly flexible. You can define up to 10 Items'. The table, titled 'Maintenance Management System', lists equipment types and their corresponding specifications across 10 columns (Spec1 to Spec10).

EqptType	Spec1	Spec2	Spec3	Spec4	Spec5	Spec6	Spec7	Spec8	Spec9	Spec10
Pressure Gauge	Dial size	Range	MOC	Stemp Length	Protection	Wetted mate	Accuracy			
Temp Gauge	Dial Size	Range	MOC	Stemp Length	Protection	Wetted mate	Accuracy			
Temp Recorder	Meter Size	Range	MOC	LCD size	Batrry Life	display resolu	Accuracy			
Flow meter	Size	Range	MOC	Applicable flu	media temp	Media Pressu	Installing typ	Accuracy		

Equipment Specification

CMMS 3.2.1

MAINTENANCE JOBS

- Planning
- Feedback

WORKSHOP

- Detailed Stats

REPORTS

- History
- Trend Charts
- Analytical

MASTERS

- Basic Data
- Plant/Location Master
- Eqpt Master

Dashboard / Masters / Equipment Spec

Eqpt Spec Master

Department* Equipment Type*

Maintenance Management System

EqptID	Dial size	Range	MOC	Stemp Length	Protection	Wetted material	Accuracy
CP200PI	63mm	0-10kg	Powder coate	60mm	IP65	316SS	+0.5kg
CP200 PI	63mm	0-10kg	Powdr coatet	60mm	IP65	316SS	+0.5kg
SP-1PI	63mm	0-6 kg	ABS	90mm	IP67	316SS	+-. 0.1 kg

Equipment specification for each eqpt.

Other Reports that are not shown here

- MTBF for any equipment
- MTTR for any equipment
- Top 10 Breakdown in a given period
- Top 10 equipment with high MTBF
- Top 10 equipment with high MTTR
- Top 10 Repeated Breakdowns
- Top 10 Repeated failures
- Top 10 Repeated reasons for failure

Preventive Maintenance & Condition Monitoring

- ✓ The schedules are automatically done by our software. No need for manual intervention.
- ✓ The software monitors for equipment replacement during BD / Preventive maintenance / condition monitoring / Opportunity maintenance and automatically corrects the PM and CM schedules accordingly.
- ✓ Anytime you can see the due date list.
- ✓ You can print the feedback form for these schedules generated automatically by the software and hand over to maintenance people to carry out.
- ✓ After maintenance, they will fill the details - job done, date, done by and handover to his supervisor to feed the data in the system.
- ✓ Once the entry is made in the feedback screen, our software will automatically store the next maintenance due date to prepare the new list whenever it becomes due.

Shutdown Maintenance

- ✓ You need just to enter shutdown planned date for plant/section.
- ✓ Our software automatically displays prefilled list of equipment in that plant area with additional columns to fill planning information like planned date with in the shutdown period going to taken up , who is going to do for those equipment that you want to attend.
- ✓ This list once prepared can be printed and handover to respective supervisors to plan for material procurement if needed and to carryout the maintenance accordingly.
- ✓ Whenever the job is completed feedback is given every day till the completion of shown period.
- ✓ Any one can see the live report at any time on current status of shutdown plan to ensure everything goes as per plan.

Opportunity Maintenance

- ✓ During any of the maintenance like PM, CM, BD, there may be situation like non-availability of spare, skilled people or time and some part of work will be left incomplete to be carried out later. Our system keeps track of them.
- ✓ Whenever the plant or part of plant gets stopped for any reason, the production department informs all maintenance personnel along with the stoppage duration.
- ✓ Then, Maintenance dept enters the duration of stoppage with plant name in the OP screen. Our software lists out all pending jobs in that plant that can be carried out within the mentioned stoppage duration.
- ✓ They can print it out and hand over to their team to attend **using others downtime !**

Annual Maintenance

- Jobs list is prepared and entered by maintenance department with planned Dates & responsibility, well in advance say 2 months.
- The list will be printed out and handed over to respective responsible persons.
- Spares to be ordered will be listed out for each job and ordered by responsible persons.
- During shutdown Maintenance, each maintenance department will enter date of job start and completion once happened every day basis.
- At any point of time, one can see the report on current status of shutdown if it is going on as per the plan to take action if any deviation.

SAMPLE SCREENS OF ONLINE DEMO

You can visit our demo site cmms.viewiss.com

You can see all reports
and even feed data to see how easy it is to use!

Demo Site - Login Page

Address to enter into our online demo

You can open this site, operate and view all the reports

You can select any maintenance department. password is prefilled. Just press Login button to enter

MAINTENANCE MANAGEMENT SYSTEM

elec

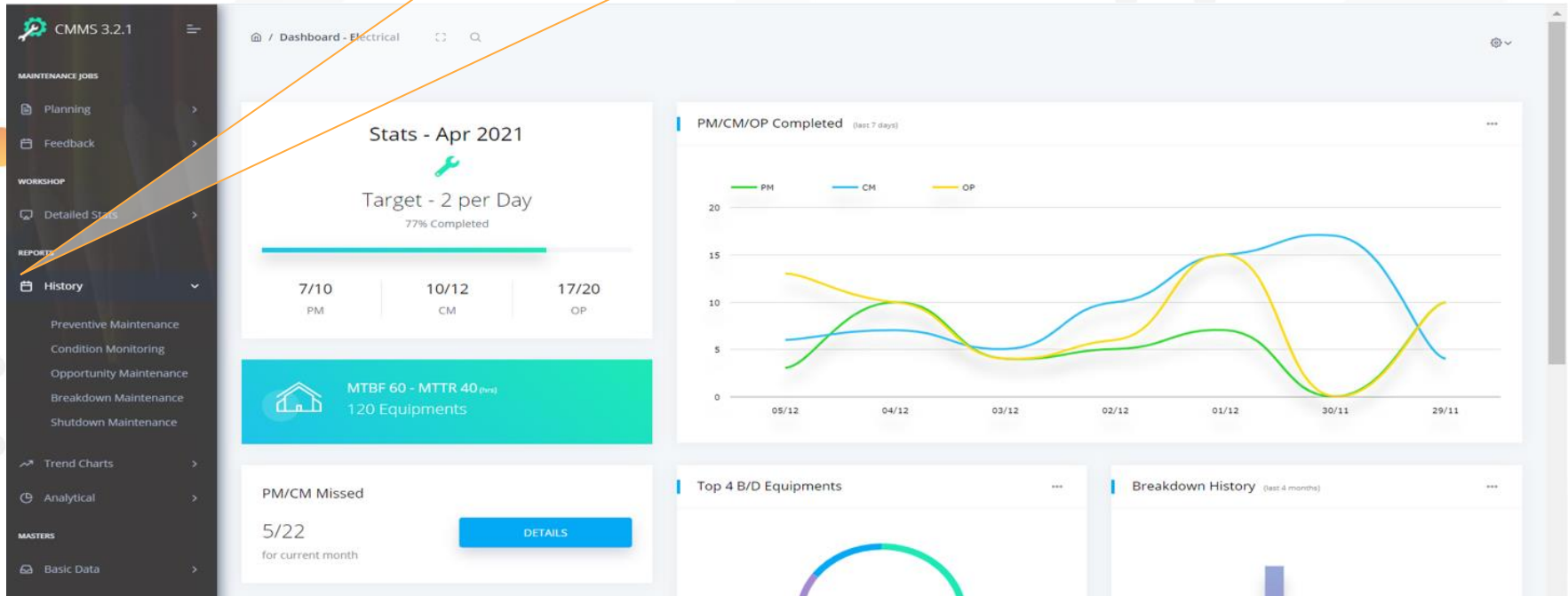
Login

Reset Password ?

Dashboard

Main Menu

History is clicked to display sub menu.
By clicking any of the item in the sub menu, you will be taken to that screen



Sample Data Entry screen

CMMS 3.2.1

MAINTENANCE JOBS

- Planning
- Feedback

WORKSHOP

- Detailed Stats

REPORTS

- History

Bas...

- Plant/Location Master
 - Eqpt Master**
 - Eqpt > Spec Name
 - Eqpt > Spec
 - General Master
- Reports

Equipment Master

Department* Elec | Spare* select... | Plant* select... | Location* | Eqpt ID* eqpt id | Eqpt Type* select...

PM Frequency* days | CM Frequency* days | Criticality N

ADD **FILTER** **RESET**

Maintenance Management System

Department	Plant	Location	Eqpt ID	PMFrequency	CMFrequency	Criticality
Elec	COOLING TOWER	Cooling Water Pump CWP-2	CWP-2	60	30	I
Elec	COOLING TOWER	Cooling Water Pump CWP-1	CWP-1	90	45	I
Elec	COOLING TOWER	Cooling Tower Pump CP200	CP200	90	45	C
Elec	COOLING TOWER	Cooling Tower Fan CF200	CF200	90	45	C
Elec	H2SO4 PLANT	Storage tank ST	Loading Pump	150	90	N
Elec	H2SO4 PLANT	Sulphur pump 2 SP-2	SP-2	90	45	I
Elec	H2SO4 PLANT	Sulphur pump 1 SP-1	SP-1	90	45	I
Elec	H2SO4 PLANT	Sulphur burner SB	Air Blower	60	45	C

Action Buttons

Add button: you need to fill all fields in the editor and press Add button to add data. Immediately data is stored and displayed in the table

Filter button: Enter any filed you need to filter in the editor and Press Filter button. Data will be displayed as per the selected parameters

Reset Button: By pressing this all fields in the editor will be reset to original to facilitate any other combination of selection.

You have clicked this sub menu to reach this screen

Action Buttons

Add button: you need to fill all fields in the editor and press Add button to add data. Immediately data is stored and displayed in the table

Filter button: Enter any filed you need to filter in the editor and Press Filter button. Data will be displayed as per the selected parameters

Reset Button: By pressing this all fields in the editor will be reset to original to facilitate any other combination of selection.

Sample Data Edit/Delete Screen

Clicking anywhere on a row makes the row editable and shows 3 icons (Save, Cancel, Delete)

By clicking any of the icons after changing data,

Save: changes made will be saved in the database.

Cancel: changes will not be saved.

Delete: deletes the entire row from the database permanently.

The screenshot displays the CMMS 3.2.1 interface. On the left is a dark sidebar with navigation options: MAINTENANCE JOBS (Planning, Feedback), WORKSHOP (Detailed Stats), REPORTS (History, Trend Charts, Analytical), and MASTERS (Basic Data, Plant/Location Master, Eqpt Master, Eqpt > Spec Name). The main content area is titled 'Equipment Master' and contains a form with the following fields: Department* (Elec), Area* (select...), Plant* (select...), Location* (text input), Eqpt Type* (select...), PM Frequency* (days), CM Frequency* (text input), and Criticality (N). There are 'ADD' and 'FILTER' buttons. Below the form is a section titled 'Maintenance Management System' containing a table with the following data:

Department	Plant	Location	Eqpt ID	PMFrequency	CMFrequency	Criticality	
Elec	COOLING TOWER	Cooling Water Pump CWP-2	CWP-2	60	30	I	Save, Cancel, Delete icons
Elec	COOLING TOWER	Cooling Water Pump CWP-1	CWP-1	90	45	I	

For more information please get in touch with us,



- ❖ Mobile : 900-3930-729 (J.Shanmugam)
- ❖ Email : admin@viewiss.com
- ❖ Website : www.viewiss.com